



Upland Arts Development CIC presents

25-27 May 2024

# SPRINGFLING

Scotland's Premier Art and Craft Open Studios Event

# Welcome



Joanna Jones  
Assistant Director,  
Upland CIC

We are delighted to present another open studios event. This year we have 104 studios, the most we've ever had! The event will take place across the region from Stranraer to Moffat (and everywhere in between!). Join us in the studios from 25-27 May 2024.

This year we continue to focus on the studios and showcasing them as unique spaces that inform visitors on how work is made. Visitors will get the chance to buy work directly from the source, with most studios having work for sale. Travelling around Dumfries & Galloway, from studio to studio, is as much an adventure as the studios themselves. We hope visitors will enjoy exploring our magnificent region. Information on getting to the region and around can be found on page 4 of this brochure.

For event participants, we have been delighted to offer more financial aid and supported participation through our bursaries. We have continued with our **CREATE programme** which was launched in 2023, this time offering two free places for artists working in experimental, installation and site-specific work that doesn't quite fit in the "traditional" studio environment. We look forward to seeing these "studios" at this year's event (page 7).

We have **13 new studios** and lots of emerging artists and makers taking part, producing everything from clothing and jewellery to painting, installation, custom knives and printmaking. **All studios are open for the full 3 days (Saturday, Sunday, and Monday), from 10am till 5.30pm.** This brochure features a dedicated

entry for each participating studio (incl. address, directions, image and more). We also have Virtual Studios on the event website for every studio offering more unique insights, photos and videos – [www.spring-fling.co.uk](http://www.spring-fling.co.uk)

This year's brochure illustration has been produced by Jamie Rose Stryker. The printing is by Alba Printers. We hope you enjoy reading the brochure and seeing all that the event has to offer and start planning your visit! We hope visitors will be able to enjoy as many studios as they can across the long weekend, however, we know you can't visit them all!

With special thanks to our funders and supporters who have helped make this year's event and its extended programme possible: Dumfries & Galloway Council, Creative Scotland, Kilgallioch Community Fund, the Barfil Trust, the Holywood Trust, Archie Sutter Watt, our dedicated board, staff and our Friends. Most importantly, we would like to thank our event participants, both new and returning, for all their hard work in preparation for the event. We can't wait to visit their studios!

On behalf of everyone at Upland, we hope you enjoy Spring Fling 2024.



## Essential

Spring Fling 2024 takes place on Saturday 25, Sunday 26 and Monday 27 May from 10.00am to 5.30pm each day.

## Information

All 104 studios included in this brochure will be open during these hours.



### IMPORTANT

**Please Remember:** Many studios do not take credit or debit cards so do take cash or a chequebook with you.

If you are a **Friend of Spring Fling** (see back of brochure for how to sign up), you will need to present your Friendship Card to take advantage of the array of discounts and offers in the studios.

If you would like to take **photographs** of artists' studios or work, please check with them first.

### PRIZE DRAW

The **Spring Fling Prize Draw** offers you the chance to win vouchers to spend in the studios, plus two tickets to any event at the **2025 Dumfries & Galloway Arts Festival!**

**1st Prize** – £100 voucher to spend in the artist's studio of your choice; plus 2 tickets to any event at the 2025 Dumfries & Galloway Arts Festival.

**2nd Prize** – £75 voucher to spend in the artist's studio of your choice.

**3rd Prize** – £50 voucher to spend in the artist's studio of your choice.

**To enter** – please see the back of this brochure for further information.

### EVENING OPENINGS

Some studios will open on the evenings of Friday 24, Saturday 25 and Sunday 26 of May (not Monday 27). Please refer to the icons or to page 7 for a full list of evening openings.

- Fri 24 May 6–8pm**
- Sat 25 May open until 8pm**
- Sun 26 May open until 8pm**

### HELP US MAKE A GREENER EVENT!

Consider our environment – please **pass on this brochure** when you have finished with it.

Please **bring a bag** with you – many studios will not be offering wrapping services.

Where possible, please **car-share**, take **public transport** or take one of our **bus tours!**

Find out about the **Sustainable Event Charter** we've signed up to on the website!



# Dumfries & Galloway



### Key

- Artists' and Makers' studios
- Galleries G
- Visit Scotland Information Centre i
- Bus Tours (page 4)
- SFRM (page 8)

*Please note, this map is for illustrative purposes only. For exact locations of all studios, please use the map on the Spring Fling website, or follow the What3Words given for each studio.*



# Getting Here

# & Around

## Getting Here

There are lots of ways you can get to D&G, with car, bus or train being the best options. Head to the website for information on public transport to and from Dumfries & Galloway.

## Getting Around

Once here, you can travel by car (please car share if you can); or use the local bus network – see [www.dumgal.gov.uk/timetables](http://www.dumgal.gov.uk/timetables)

Or you could take one of the special Spring Fling bus tours. There are also options by foot or bike.

## BIKING

Why not take to two wheels and really explore the magnificent Dumfries & Galloway countryside? Lots of our studios are accessible by bike and make for a great day's cycle. Head to the website to find out about bike (and e-bike) hire, cycle routes, and more.

**The KM Rally** 24-26 May – a recreational cycling weekend for all ages/abilities, based at Penpont. Guided rides and suggested routes – some of which go by Spring Fling studios.

## BUS TOURS

Presented by **Thornhill Community Transport**, **Cairn Valley Community Transport** and **Galloway Community Transport**, these tours aim to make visiting our studios more accessible – and help to reduce car use. The exact route and timing of all trips is left to the discretion of the driver. More information available on the website.

### // Sat 25 May

#### On the Pink Route

**Pick up:** 10am St. John's Town of Dalry  
Calling at Balmaclellan, Corsock, Kirkpatrick Durham, Laurieston.

#### On the Green Route

**Pick up:** 10am Dumfries

#### On the Orange Route

**Pick up:** 10am Dumfries

### // Sun 26 May

#### On the Blue Route

**Pick up:** 10am Kirkcudbright  
Visiting studios in Stranraer, Portpatrick and the Rhins.

#### On the Red Route

**Pick up:** 10am Dumfries / 10.30am Lockerbie

### // Mon 27 May

#### On the Purple Route

**Pick up:** 9am New Galloway  
Calling at Gatehouse of Fleet, Borgue, Kirkcudbright, Twynholm.

**Tickets: £16 per person,  
£14 for Spring Fling Friends/Concessions.**

24 hour booking via Spring Fling website: [www.spring-fling.co.uk](http://www.spring-fling.co.uk)  
To arrange booking in person at the Upland office or to book during the Spring Fling weekend please phone 07787 299 487.



# Evening Openings



As well as being open daily 10.00am till 5.30pm during the event, some of our studios offer evening openings: 6-8pm on Friday 24 May and until 8pm on Saturday 25 and Sunday 26 May.

## Fri 24 May 6-8pm

*Amanda Hayler* (Studio 1, p12)  
*Gail Kelly* (Studio 2, p12)  
*Sarah Ross-Thompson* (Studio 3, p13)  
*Jane Fraser* (Studio 4, p13)  
*Glenda Waterworth* (Studio 5, p14)  
*Linda Irving* (Studio 6, p14)  
*Frances Ross* (Studio 8, p15)  
*Hope London* (Studio 10, p16)  
*Sarah Stewart* (Studio 11, p17)  
*Davy Brown* (Studio 12, p17)  
*Kay Ribbens* (Studio 13, p18)

*Elizabeth Gilbey* (Studio 19, p21)  
*Sarah Rogers* (Studio 20, p21)  
*Scott McFarlane* (Studio 21, p22)  
*Julie Hollis* (Studio 27, p25)  
*Alistair Hamilton* (Studio 28, p25)  
*Alison Corfield* (Studio 29, p26)  
*Annirose Ansbro* (Studio 31, p27)  
*Laura Boswell* (Studio 32, p27)  
*Joshua Miles* (Studio 33, p28)  
*Patti Leino* (Studio 34, p28)  
*Laura Derby* (Studio 35, p29)

*Angela Lawrence* (Studio 48, p37)  
*Ian McKinnell* (Studio 50, p38)  
*Kim Ayres* (Studio 51, p38)  
*Sheena McCurrach* (Studio 52, p39)  
*Leeming & Paterson* (Studio 54, p40)

*Yuliya Lennon* (Studio 64, p45)  
*Louisa Birdsall* (Studio 65, p45)  
*Philippa Sinclair* (Studio 66, p46)  
*Kate Bentley* (Studio 67, p46)  
*Alan Cameron* (Studio 68, p47)  
*William Spurway* (Studio 75, p50)  
*Joanna Shennan* (Studio 76, p51)  
*Andrew Adair* (Studio 77, p51)

*Alexander Robb* (Studio 81, p54)  
*Hugh Bryden* (Studio 82, p54)  
*Ruth Elizabeth Jones* (Studio 83, p55)  
*Anne Butler* (Studio 90, p58)

*Jackie Zehnder* (Studio 101, p65)

## Sat 25 May open until 8pm

*Sarah Ross-Thompson* (Studio 3, p13)  
*Jane Fraser* (Studio 4, p13)  
*Glenda Waterworth* (Studio 5, p14)  
*Linda Irving* (Studio 6, p14)  
*Frances Ross* (Studio 8, p15)  
*Joshua Williams* (Studio 17, p20)

*Elizabeth Gilbey* (Studio 19, p21)  
*Sarah Rogers* (Studio 20, p21)  
*Scott McFarlane* (Studio 21, p22)  
*Annirose Ansbro* (Studio 31, p27)  
*Patti Leino* (Studio 34, p28)  
*Laura Derby* (Studio 35, p29)

*Angela Lawrence* (Studio 48, p37)  
*Kim Ayres* (Studio 51, p38)  
*Sheena McCurrach* (Studio 52, p39)  
*Sarah McCusker* (Studio 53, p39)  
*Leeming & Paterson* (Studio 54, p40)  
*Sally Jennings* (Studio 59, p42)  
*Adam Booth* (Studio 60, p43)  
*Pamela Grace* (Studio 61, p43)  
*Allan Wright* (Studio 62, p44)  
*Clare Dawdry* (Studio 63, p44)

*Yuliya Lennon* (Studio 64, p45)  
*Heather Blanchard* (Studio 102, p65)  
*Colin Blanchard* (Studio 103, p66)  
*Bella Green* (Studio 104, p66)

## Sun 26 May open until 8pm

*Jane Fraser* (Studio 4, p13)  
*Glenda Waterworth* (Studio 5, p14)  
*Linda Irving* (Studio 6, p14)  
*Frances Ross* (Studio 8, p15)

*Scott McFarlane* (Studio 21, p22)  
*Annirose Ansbro* (Studio 31, p27)  
*Laura Derby* (Studio 35, p29)

*Kim Ayres* (Studio 51, p38)  
*Leeming & Paterson* (Studio 54, p40)  
*Yuliya Lennon* (Studio 64, p45)

Lorna Phillips



# Emerge

# Mentoring

# Programme

*Emerge is a programme of mentoring and a bursary of £1,000 for early career artists or makers, working in any visual art or craft medium, who have a strong connection to Dumfries & Galloway.*

This year we have awarded two Emerge Bursaries which will see each recipient paired up with an experienced Upland artist or maker. As well as creating new work and taking part in Spring Fling, the recipients will also benefit from go & see trips, networking and training opportunities.

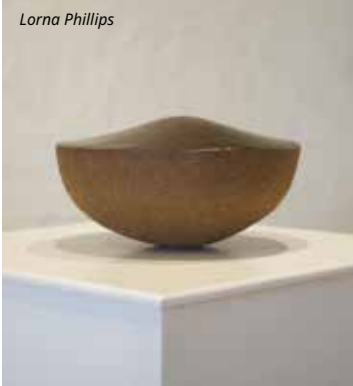
Emerge aims to provide support which will enable the participants to develop both creatively and professionally providing a stepping stone between education or employment and a career in the arts.

One of this year's bursaries is specifically for an emerging artist or maker aged 30 years and under, which is supported by The Holywood Trust and the Archie Sutter Watt Trust. The second bursary is for an emerging artist or maker of any age, which is supported by Creative Scotland.

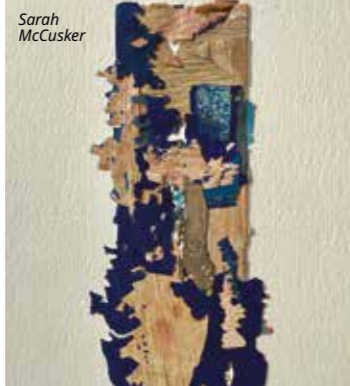
Emerge recipients for 2024 are:

**Sarah McCusker** (Studio 53, p39)

**Lorna Phillips** (Studio 58, p42)



Lorna Phillips



Sarah McCusker



Sarah McCusker

Bea Last



# Create

*This programme awards free entry into Spring Fling for artists working in installation, experimental or site-specific work that doesn't necessarily fit within the 'traditional' or 'typical' open studios setting.*

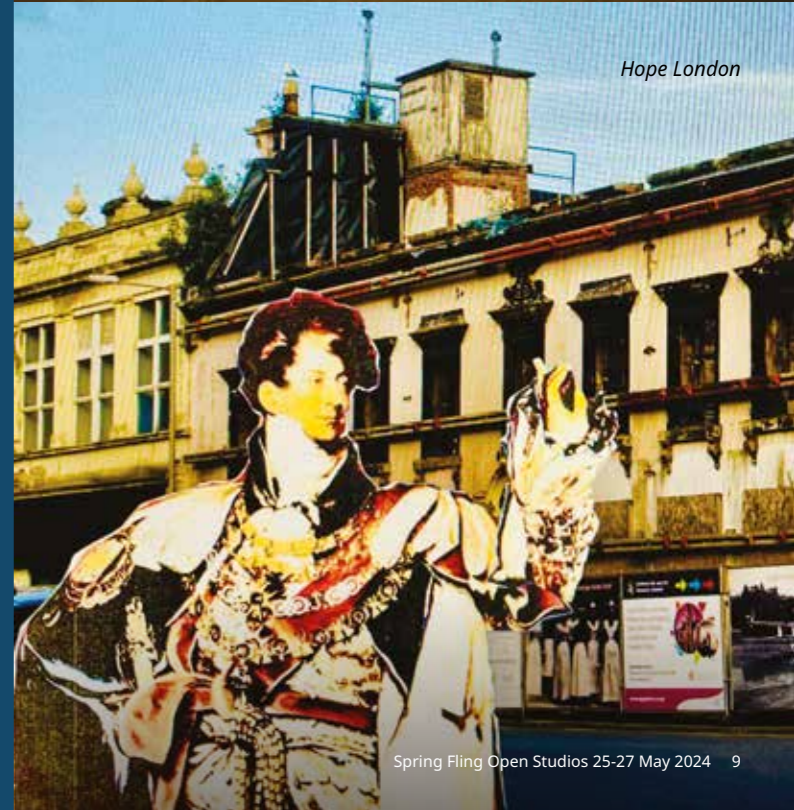
The programme was first launched at the 2023 event as a way to support artists and makers working in these disciplines, to make the event more accessible to a broader range of artists and to widen the event's offering for visitors. Upland hopes to emphasise that although Spring Fling is for many participants a way of generating income, it can also be a platform to showcase exciting, less commercial work.

*We are delighted to make this award to two artists for the 2024 event:*

**Bea Last** (Studio 78, p52)

**Hope London** (Studio 10, p16)

Hope London





Amy Whiten and Ali Wyllie, Recoat

# SFRM is back!

Spring Fling Rural Mural (SFRM) returns in 2024 celebrating 10 years since the project was established. This time with a large-scale mural in the west of the region!

We are delighted to deliver another year of SFRM in partnership with Recoat, the Argyll-based street art duo. This year's project focuses on the west of our region and the coastal town of Stranraer.

Recoat are pairing up with local visual artist Jennifer Buchanan to paint a wall in Stranraer, with the design of the mural heavily influenced by Stranraer residents through various public engagement sessions and meetings with town groups. Creative Stranraer, our community partners, have worked tirelessly to find the perfect wall, to engage the local community and have worked with Upland to make sure SFRM 2024 adds value to the town, complementing the existing mural. Upland is delighted to be part of the many exciting projects taking place in Stranraer in 2024!

**The Mural Location:** The Boat House, Agnew Park, Stranraer, DG9 7JZ

[computers.glass.heads](http://computers.glass.heads)

*This project is funded by Killgallioch Community Fund, administered by Foundation Scotland.*



Jennifer Buchanan



Alice Francis and 1010 (2014 D&G)

# 10 Years of SFRM

Here are some images from SFRM over the last 10 years!



Rory Laycock and 44 Flavours (2016 Berlin)



Recoat and Morag Paterson (2016 Glasgow)



Amy Winstanley and Will Barras (2014 D&G)



## Families

Most of our studios are family friendly and are happy to welcome visitors of all ages!

Look out for this icon  in the studio entries.

In addition, several offer special activities or attractions which might appeal to younger people.

**Sarah Stewart** (Studio 11, p17)

**Deborah Campbell** (Studio 84, p55)

**Annirose Ansbro** (Studio 31, p27)

**Richard Foster** (Studio 92, p60)

**Angela Lawrence** (Studio 48, p37)

**Cathy van Hoppe** (Studio 97, p63)

**Ian McKinnell** (Studio 50, p38)

**Jackie Zehnder** (Studio 101, p65)

**Kim Ayres** (Studio 51, p38)

**Colin Blanchard** (Studio 103, p66)

**Sarah McCusker** (Studio 53, p39)

**Leeming & Paterson** (Studio 54, p40)

**Upland** is the visual art & craft development organisation for Dumfries & Galloway.

**Spring Fling** is our flagship event but we deliver many other creative projects throughout the year.

We **support** and **promote** artists and makers based in and with a strong connection to D&G.

We **connect** our artists and makers with audiences, communities and each other.






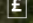
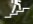



[www.weareupland.com](http://www.weareupland.com)



Image: SFRM (44 Flavours + Rory Laycock)

# The Studios

## ICONS

-  Parking
-  Accessible parking
-  Wheelchair access
-  Toilet facilities
-  Family Friendly
-  Price range
-  Stairs
-  Accepts credit/debit cards
-  Also open through the year by appointment
-  Evening Opening

## BADGES

### SPRINGBACK

Artists and makers with a strong connection to Spring Fling, Upland or Dumfries & Galloway.

### NEIGHBOUR

Artists and makers from Northern Ireland, East Ayrshire, South Ayrshire, South Lanarkshire, Scottish Borders and Cumbria.

### EMERGE

Our 2024 Emerge awardees! Find out about Emerge on page 6.

### NEW STUDIO

Artists and makers taking part in Spring Fling for the first time.

### CREATE

Artists awarded a place in the event through our brand-new scheme CREATE. Information on page 7.

### NEW GRADUATE

Artists and makers from Scotland who have recently graduated and are embarking on a career in their creative practice.



## AMANDA HAYLER

01

The Cabin, Bowling Green Road, Stranraer, DG9 8AS  
 T: 07801 430 468 E: [ahaylercchs@yahoo.co.uk](mailto:ahaylercchs@yahoo.co.uk)  
 W: [www.madlittleartist.co.uk](http://www.madlittleartist.co.uk) f [madlittleartist](https://www.facebook.com/madlittleartist) @ [mad.little.artist](https://www.instagram.com/mad.little.artist)

..... **NEW STUDIO**

I am an artist who enjoys using watercolour and pen to create imagery that is joyful and lighthearted. I am inspired by the natural world and the built environment around Stranraer and the Rhins. I also use other media such as acrylic, collage and printmaking.

**What to expect:** A warm welcome to my working studio which is a converted caravan situated in my garden. Works-in-progress, sketches, and developmental pieces will be on show. Original artwork, prints and cards will be for sale in my conservatory. Tea, coffee and biscuits!

£ £2 - £300 ..... Free pack of postcards (4) with every purchase

**Recommendation:**

The Fig & Olive café, 99 George Street, Stranraer, Wigtownshire, DG9 7JP. A lovely stop for refreshments or lunch.

**Directions:** Coming into Stranraer from the east, Bowling Green Rd is a right hand turning off the A75. The Cabin is behind Dunard, the first house on the right hand side of Bowling Green Rd. Go down the driveway, past the sheds into the garden.

**Accessibility:** Wheelchair access into garden, not caravan. Steps into house and studio.

what3words: ///loafer.devours.flickers



## GAIL KELLY

02

Creative Stranraer Hub, 23 King St, Stranraer, DG9 7JU  
 T: 07876 776 812 E: [gail@alganarts.com](mailto:gail@alganarts.com) @ [gaikelly\\_alganarts](https://www.instagram.com/gaikelly_alganarts)  
 W: [gaikellyprintmaker.com](http://gaikellyprintmaker.com) f [alganarts](https://www.facebook.com/alganarts)

..... **NEIGHBOUR**

I make hand-stitched collages inspired by little mountain farms and cottages I see on my travels in Britain and Ireland. My linocuts are printed on Irish linen and reflect the patterns of the landscape and the colours of the changing seasons.

**What to expect:** I will demonstrate how I make my linen collages with work-in-progress at every stage. Visitors will be able to see the lino, tools and vintage linen I use as I discuss arranging the composition before sewing the linen pieces in place by hand.

£ £2 - £600 ..... 10% discount for Friends of Spring Fling

**Recommendation:**

Glenwhan Gardens and Tearoom, Stranraer DG9 8PH. Beautiful gardens and arboretum with plants for sale and a great tea room too.

**Directions:** The Hub is at the top of King Street, opposite the Fig & Olive café. By car, King Street is one-way, Agnew car park is two minutes walk.

**Accessibility:** One small step in from street, toilet not wheelchair accessible.

what3words: ///motorist.dome.language



## SARAH ROSS-THOMPSON

03

7 South Crescent, Portpatrick, DG9 8JR  
 T: 07914 608 053 E: [sarah@rossthompsonprints.com](mailto:sarah@rossthompsonprints.com)  
 W: [www.rossthompsonprints.com](http://www.rossthompsonprints.com) f [rossthompsonprints](https://www.facebook.com/rossthompsonprints)

..... **NEW STUDIO**

As a Fine Art Printmaker specialising in collagraphy, I build collage-based printing plates using string, salt, porridge oats and textured wallpapers.

**What to expect:** I will be opening the lower rooms of my house as a gallery space and inviting visitors to also explore my third-floor studio. Mindful of the issues of accessibility, I am aiming to do demonstrations on both the ground and upper floors when possible.

£ £2.50 - £690 ..... 10% discount for Friends of Spring Fling

**Recommendation:**

The Port Pantry, 24 Main St, Portpatrick, DG9 8JL. Only a few steps from the beautiful harbour, try the squidgy lemon cake!

**Directions:** Portpatrick is the last stop at the end of the A77. Turn left as you hit the seafront. I am in the elegant three-storey house opposite the Lighthouse.

**Accessibility:** Steps onto ground floor then moderately accessible throughout. Studio on third floor.

what3words: ///hood.carpets.highlight



## JANE FRASER

04

Shian, Kirkmaiden, Drummore, DG9 9QP  
 T: 07984 146 870 E: [janefraser5@hotmail.com](mailto:janefraser5@hotmail.com) f [janefraserstudio](https://www.facebook.com/janefraserstudio)  
 W: [www.janefraserstudio.com](http://www.janefraserstudio.com) @ [janefraserstudio](https://www.instagram.com/janefraserstudio)

..... **NEW STUDIO**

As an artist working with wood, I create a range of forms using a lathe, enhancing the woods, natural features with detailed freehand pyrography. My response to nature is evident in my work and my love of intricate drawings allows me to create unique pieces.

**What to expect:** I have two workshops, one houses my lathe and other associated machinery. The other is used as a display gallery for finished pieces of work. Both of these workshops have direct access for the public.

£ £5 - £500 ..... 10% discount for Friends of Spring Fling

**Recommendation:**

Mariners Coffee Shop: Drummore. Specialising in freshly caught local seafood.

**Directions:** From Drummore, turn right onto Mill Street, take the next right and continue up hill to Kirkmaiden passing the Church on the left. Turn left, studio is on the right.

**Accessibility:** The workshops are on one level with brick cobbled floors. There is a small wooden lip to access the display area.

what3words: ///hang.lions.angry





## GLENDA WATERWORTH

05

Fine View, Drummore, DG9 9QD  
 T: 01776 840656 E: [artist@glendawaterworth.com](mailto:artist@glendawaterworth.com) @ [glendawwww](https://www.instagram.com/glendawwww)  
 W: [www.glendawaterworth.com](http://www.glendawaterworth.com) f [glendawaterworthartist](https://www.facebook.com/glendawaterworthartist)



My abstract paintings are influenced by the sea and shoreline. My recent work explores the contrast of chaos and calm, using energetic mark-making and bold colour palettes to represent mental conflict, layered with smoother brushwork to introduce the calming influence of the natural world.

**What to expect:** Visitors will be warmly welcomed into my new, purpose-built art studio with its inspiring sea view looking across Luce Bay. Very much a working space, there will be work at all stages of development, experimental work, sketchbooks and finished paintings and prints for sale.

£ £3 - £1,000

### Recommendation:

The Ship Inn on Shore Street by the harbour in Drummore, open from 12 noon daily serving bar food, delicious cakes and scones.

**Directions:** Follow A716 into Drummore. Turn right onto Mill Street, pass village shop on left, take next right towards Kirkmaiden, Fine View is 160m up the road on the right.

**Accessibility:** Studio, gallery and toilet all on the ground floor, but toilet facilities too small for wheelchair users.

**what3words:** ///headboard.stud.gobblers



## LINDA IRVING

06

Smiddy Cottage, Mull of Galloway, Drummore, DG9 9HP  
 T: 01776 840442 E: [lindaannirving@gmail.com](mailto:lindaannirving@gmail.com)  
 W: [www.lindairving.co.uk](http://www.lindairving.co.uk) f [Linda Irving Felt Artist](https://www.facebook.com/LindaIrvingFeltArtist) @ [linda.felting](https://www.instagram.com/linda.felting)



I work in the medium of wool fibre creating felted and stitched paintings exploring colour, texture and form reflecting the beauty of the land and seascapes in D&G.

**What to expect:** At my studio and gallery I like to inspire people to use the medium of felt making as a fine art form. I will demonstrate all my processes and there will be opportunities to try felt making.

£ £5 - £800

Free pack of postcards with every purchase

### Recommendation:

The Mull of Galloway Lighthouse and RSPB reserve.

**Directions:** A75 westbound, left onto B7084 to Sandhead, left onto A716 to Drummore, through village, B7041 to 'Mull of Galloway Attractions' (brown signs) and studio is on right two miles from Drummore.

**Accessibility:** Very accessible, ground floor including toilet.

**what3words:** ///spades.waggled.adjust



## LISA HOOPER

07

Seymour House, 25 High Street, Port William, DG8 9SL  
 T: 01988 700392 E: [hoopoe.prints@btinternet.com](mailto:hoopoe.prints@btinternet.com) @ [hoopoe.prints](https://www.instagram.com/hoopoe.prints)  
 W: [www.hoopoeprints.co.uk](http://www.hoopoeprints.co.uk) f [Lisa Hooper- Hoopoe Prints](https://www.facebook.com/LisaHooper-HoopoePrints)



I'm a wildlife artist/printmaker using modern and traditional techniques to produce striking images of birds and wildlife. I also make prints of landscapes. Much of my work is inspired by visits to Orkney and Shetland. I try to promote wildlife conservation through my work.

**What to expect:** You will find a large studio with two presses; one of them very old! I will be demonstrating the techniques I use, producing more than one print over the weekend. This year I will be etching; explaining how the plates are made and printed.

£ £3 - £500

4 free cards with any print purchase

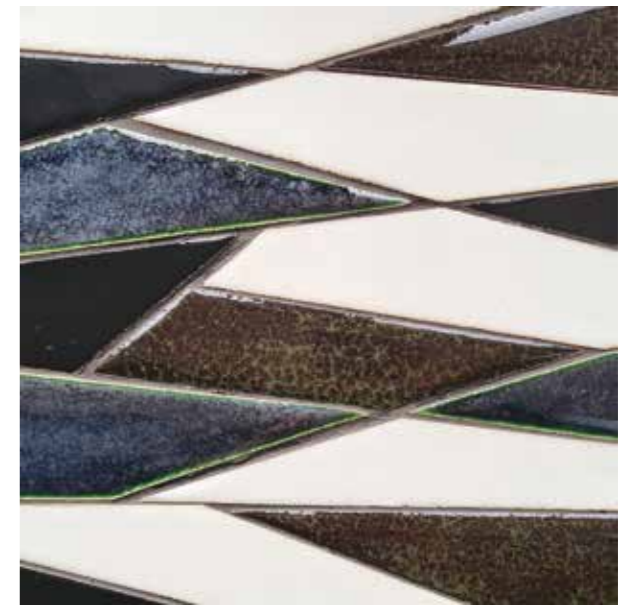
### Recommendation:

The View, Port William's café, run by PIRSAC and located on the village harbour.

**Directions:** Seymour House is on the B7085 on the northern edge of the village. From Wigtown it is the first house on the right after the traffic calming.

**Accessibility:** Ground floor. One step down into garden and one into the house.

**what3words:** ///steered.regretted.rumbles



## FRANCES ROSS

08

Creech House, Sorbie, DG8 8AH  
 T: 07780 678 244 E: [frances@francesrossceramics.com](mailto:frances@francesrossceramics.com)  
 W: [www.francesrossceramics.com](http://www.francesrossceramics.com) @ [@francesrossmakes](https://www.instagram.com/francesrossmakes)



I make ceramic sculpture, tiles and architectural ceramics. My recent work explores light and wave patterns, and connections with the more than human world. I create my work by handbuilding with slabs, press moulding and slip casting.

**What to expect:** A busy working studio – equipment and materials, clays and glazes, sketchbooks, tests and experiments, and work-in-progress as well as completed works large and small. I'll be busy at my workbench and happy to discuss my processes and inspirations.

£ £30 - £3,000

### Recommendation:

The Pheasant in Sorbie for wonderful Italian evening meals (Tues-Sat).

**Directions:** On the A746 north of Sorbie, my studio is next door to the disused Galloway Granite factory.

**Accessibility:** Access is via a level gravel and block paved drive. Small step into studio, then one level throughout.

**what3words:** ///bracelet.handyman.renews



## ELLA MCCREATH

09

The Old Manse, 9 Harbour Road, Wigtown, DG8 9EL  
 T: 07756 858 148 E: [ellamccreath@mac.com](mailto:ellamccreath@mac.com)  
 W: [www.ellaandgrace.co.uk](http://www.ellaandgrace.co.uk) @ [@ellaandgrace\\_](https://www.instagram.com/ellaandgrace_)



I am a practising potter specialising in functional tableware. I work with white earthenware clay which is then glazed white. Some pieces have additions such as a leather handle or a wooden spoon.

**What to expect:** Visitors can view my studio and see the equipment I use: kilns, the wheel, hand tools. There will also be shelves of pots drying and waiting to be fired and buckets of recycled clay.

£ £10 - £100

**Recommendation:** The bird hide and the RSPB Crook of Baldoon, Shell Road, Newton, DG8 9AF.

**Directions:** In Wigtown, looking at the County Building, take the road down to the right hand side. No 9 is a couple of hundred yards on the left.  
**Accessibility:** There is accessible street parking. My driveway is pebbles so not sure I can guarantee wheelchair access, although no steps.

**what3words:** ///trout.allies.pavilions



## HOPE LONDON

10

Behind 24 Bank St, Lochancroft Lane, Church St, Wigtown, DG8 9HP  
 T: 07702 421 720 E: [hopelondonartist@gmail.com](mailto:hopolondonartist@gmail.com)  
 W: [hopelondon.com](http://hopelondon.com) f [hopelondonartist](https://www.facebook.com/hopolondonartist) @ [hopelondonartist](https://www.instagram.com/hopolondonartist)



CREATE

Art is transformative. I know this from years as a community artist and recently, making work dealing with my own experience of deep loss and illness. Experimenting with different media and returning to the comfort of drawing, the process has been cathartic, healing, even joyful.

**What to expect:** This year I'm participating in CREATE, a scheme for artists working in installation, experimental or site-specific work. In my studio and the garden, the focus will be on new and recent experimental work featuring outdoor and video-based pieces, drawings and more.

£ £3 - £2,500

10% discount for Friends of Spring Fling

**Recommendation:** The Community Shop is always good for an interesting rummage and proceeds benefit worthwhile local causes.

**Directions:** A75 to A714 Wigtown. Enter Wigtown, turn left, go down left side of County Buildings, park on Bank St. Proceed left onto Church St. left again Lochancroft Lane.  
**Accessibility:** Wheelchairs can come through the back garden (grass) – possible to drive up the back unmade lane (Lochancroft) to drop someone off.

**what3words:** ///echo.punters.wipes



## SARAH STEWART

11

Craigard, 13 North Main Street, Wigtown, DG8 9HL  
 E: [sarahstewart@live.com](mailto:sarahstewart@live.com) W: [www.sarahstewartprintmaker.co.uk](http://www.sarahstewartprintmaker.co.uk)  
 T: 07903 044 929 f [@sarahmakesprints](https://www.facebook.com/sarahmakesprints) @ [@sarahmakesprints](https://www.instagram.com/sarahmakesprints)



I'm a printmaker inspired by found and vintage objects, each one a carrier of stories of the past. I produce fine art screenprints and linocuts with a contemporary aesthetic and apply my designs across a variety of textile and bookforms.

**What to expect:** Alongside my printing presses, visitors to my studio will be able to see everything from the ephemera that inspires me, working sketches and colour studies through to my finished prints. My child-friendly studio will have opportunities for all visitors to get involved in making.

£ £2.50 - £695

Free mini print with every large print purchase

**Recommendation:** Faodail, on North Main Street has a beautifully curated selection of antiques with a Retro Room upstairs.

**Directions:** Arriving in Wigtown on the A714 from Newton Stewart, turn right at the T-junction onto North Main Street. Craigard is the second door on the right, next to the engravers.  
**Accessibility:** There are two steps into the studio from street level.

**what3words:** ///pizzeria.aquatics.shorts



## DAVY BROWN

12

The Bookshop, 17 North Main Street, Wigtown, DG8 9HL  
 T: 07792 360 920 E: [davybrownartist@gmail.com](mailto:davybrownartist@gmail.com)  
 W: [www.davybrown.com](http://www.davybrown.com) f [Davy Brown Artist](https://www.facebook.com/DavyBrownArtist)



I graduated from Glasgow School of Art in 1972 and have been painting ever since. I work outdoors whenever possible, gathering my information in the form of annotated thumbnail sketches, pastel studies and small oil paintings, which I develop and re-invent in my studio.

**What to expect:** I will be showing paintings principally inspired by the Galloway landscape along with still lifes. I will also have on sale high quality giclee prints and cards of similar subject matter. My sketchbooks will be on display and I will be painting throughout the weekend.

£ £160 - £4,000

5% discount for Friends of Spring Fling

**Recommendation:** Wigtown Bird Hide is a beautiful attraction for spotting wildlife. About 15 minutes' walk from The Bookshop, down Harbour Rd towards Wigtown Harbour and the River Bladnoch.

**Directions:** At A75 roundabout at Newton Stewart take Wigtown direction. In Wigtown pass the school on the left. At the T junction turn right and The Bookshop is on your right.  
**Accessibility:** The venue is on the second floor. There is no lift. There are approximately 15 steps with a banister.

**what3words:** ///stardom.worms.patrolled



## KAY RIBBENS

13

Mochrum Park House, Kirkcowan, DG8 0BY  
 T: 07909 618 126 E: [kayribbens@hotmail.com](mailto:kayribbens@hotmail.com)  
 W: [www.kayribbens.co.uk](http://www.kayribbens.co.uk) f Kay Ribbens Hats



I am a textile designer specialising in unusual hats & headwear. Each hat is individually woven to create a unique, comfortable, affordable piece of original art. My work is a continuous experiment, creating a new collection every year.

**What to expect:** Visitors can expect a warm welcome into my large busy studio bursting with colour, yarns, wool, tools, threads, sketches, paintings, works-in-progress as well as a large collection of hats & headwear of all sizes, designs & colours.

£ £12.50 - £500 ..... 10% discount for Friends of Spring Fling

### Recommendation:

The Old Bank Bookshop, Wigtown. Joyce & Ian have thousands of high quality antiquarian & second hand books & sheet music.

**Directions:** From Wigtown take B733 towards Kirkcowan for 4 miles. From Newton Stewart take A75 towards Stranraer. After small cottage hospital take 2nd left onto minor road. Follow for 5 miles.

**Accessibility:** Studio on ground floor. Small step at entrance.

what3words: ///coconuts.doll.drama



## SARAH LOUISE PLANT

14

Grange Cottage Studio, Mochrum Park, Kirkcowan, DG8 0BY  
 T: 07754 369 780 E: [sarahlouartist@gmail.com](mailto:sarahlouartist@gmail.com)  
 W: [sarahlouiseartist.co.uk](http://sarahlouiseartist.co.uk) f [sarahlouiseartistscotland](https://www.facebook.com/sarahlouiseartistscotland)



NEW STUDIO

I love exploring our natural world, taking photos of breathtaking sunrises, the rugged coastline and the rolling hills of south-west Scotland. From my garden room studio I enjoy mixing a fresh palette in water mixable oil paint and creating colourful landscape paintings.

**What to expect:** My studio will be filled with paintings and printed gifts of views across Galloway and Ayrshire. I will be happily mixing, painting and chatting. Through the big picture window visitors can view the feeding garden birds and enjoy time outside amongst the peaceful cottage planting.

£ £1.50 - £250 ..... 10% discount for Friends of Spring Fling

### Recommendation:

The Machars Farm Shop in Wigtown is a great place to pick up a takeaway hot drink, pie or pastry.

**Directions:** Halfway between Wigtown and Kirkcowan on the B733 and my studio is on the opposite side of the road to the entrance into the Mochrum Park Estate.

**Accessibility:** Off road parking available and just two steps up into my studio.

what3words: ///broker.nips.hobby



## MARY GLADSTONE

15

Craichlaw, Kirkcowan, DG8 0DQ  
 T: 01671 830208 E: [craichlaw2@yahoo.co.uk](mailto:craichlaw2@yahoo.co.uk)  
 W: [Marygladstonepottery.uk](http://Marygladstonepottery.uk) @ [Marygladstonepottery](https://www.instagram.com/Marygladstonepottery)



At my studio I make a wide variety of beautifully designed and finished pots. Depending on clay type and glaze these are glaze fired in either a gas (reduction), or electric kiln. I sell pots from an adjacent gallery, shops, and exhibitions.

**What to expect:** Visitors will be able to see a working pottery studio with differing clays, pottery wheel, kilns, throwing and trimming equipment. In addition, glaze making materials, pyrometric cones, coloured slips, wild clay slips, test tiles and biscuit fired pots will be on display.

£ £18 - £300 ..... 10% discount for Friends of Spring Fling

### Recommendation:

Walk around Craichlaw Garden which includes a circular walk around a stunning loch with boat house, curling stone house and bathing house.

**Directions:** Turn south off the A75 at The Half Way House junction, 7 miles west of Newton Stewart. Follow the road for 1/4 mile, turn first right at lodge gates.

**Accessibility:** My pottery is easily accessible. Both workshop (with small step) and showroom are not large spaces.

what3words: ///straddled.glider.update



## SUZI PLUNKETT

16

2 Drumterlie Steading, Newton Stewart, DG8 6QG  
 T: 07399 000 780 E: [littledotcreations@outlook.com](mailto:littledotcreations@outlook.com)  
 W: [www.littledotcreations.co.uk](http://www.littledotcreations.co.uk) f [littledotcreations](https://www.facebook.com/littledotcreations)



Using fine liner pens, I create my illustrations using thousands of little dots and circles. Designing prints, homewares and greetings cards, everything is handmade in my studio. I draw inspiration from my love of nature, fairy tales and life growing up in rural Galloway.

**What to expect:** Visitors to the studio can expect to see my works-in-progress, all of the tools I use to create my products, including heat presses, raw materials and printers. A wide range of my work will be on display and visitors are welcome to browse!

£ £2.50 - £300 ..... 10% discount for Friends of Spring Fling during event

### Recommendation:

Crafty Distillery. Great cocktails and lovely views!

**Directions:** Take exit towards Stranraer at NS roundabout, follow A75 for approx 2 miles. Turn left, follow old military road for 1 mile. Turn right, follow the sign for Drumterlie Steading.

**Accessibility:** My studio door is narrow so wider equipment may struggle to access.

what3words: ///passions.dices.fulfilled



## JOSHUA WILLIAMS

17

1 Station Road, Newton Stewart, DG8 6LJ  
 E: [byjoshuawilliams@gmail.com](mailto:byjoshuawilliams@gmail.com)  
 W: [www.byjoshuawilliams.com](http://www.byjoshuawilliams.com) @ceramicsbyjoshuawilliams



Using clay mixed by hand and sourced in-part from local clay, I make both functionalware for the table and art-ceramic pieces. My aim is to bring the values and practices of the British pottery tradition into the contemporary setting.

**What to expect:** There will be an exhibition of my most recent work, and an opportunity to see a working pottery studio. I will also be showing examples of the processes of turning found materials into useable clays and slips.

£ £21 - £750

**Recommendation:** Reading Lasses in Wigtown is the perfect spot to browse books and eat a wonderful slice of freshly made cake.

**Directions:** The studio is on the corner of Station Road, next door to the butchers and opposite the Cattle Market.  
**Accessibility:** There is a slight step up from the front door which is small enough for any pushchair or wheelchair. Easy street access and parking.

what3words: ///worlds.sorters.district



## TIMOTHY WESTLEY

18

Unit 3, Block 1, Holmpark Industrial Estate, Minnigaff, DG8 6AW  
 E: [clementknives@gmail.com](mailto:clementknives@gmail.com)  
 W: [www.clementknives.com](http://www.clementknives.com) @clementknives



I am a craftsman, putting waste back into human hands by making chef knives out of recycled materials, including laughing gas canisters and plastic washed up on Wigtownshire's beaches.

**What to expect:** When you visit I'll talk you through the different areas of my workshop and how each one is dedicated to a specific part of my knife-making process. There'll be works-in-progress and also finished knives available.

£ £100 - £300

**Recommendation:** Further down the road from my studio is the brilliant Galloway Heathers Garden Centre.

**Directions:** Along the B7079, turn into Holmpark Industrial Estate. Take the first right and then first right again into a courtyard of units. I'm unit 3.  
**Accessibility:** All one level. Sharp knives and objects everywhere, please ask before touching anything and keep children close by.

what3words: ///calibrate.jugs.behaving



## ELIZABETH GILBEY

19

Rusko Studio, Gatehouse of Fleet, DG7 2BS  
 T: 07801 933 375 E: [liz@elizabethgilbey.co.uk](mailto:liz@elizabethgilbey.co.uk)  
 W: [ruskostudio.com](http://ruskostudio.com) f [liz.gilbey](https://www.facebook.com/liz.gilbey)



I am a classically trained artist and I work direct from nature. I paint landscape, animals, flowers, still life, people and whatever takes my eye as a joy to capture. I use charcoal, pastel and oils as well as watercolour sometimes.

**What to expect:** In my studio you will see work finished and in progress. The studio is a beautiful light space in a restored Victorian stables in the scenic Fleet Valley. There are displays to show traditional art techniques as well as all my art kit on show.

£ £50 - £1,000 Six £25 art lessons for the price of five, £125

**Recommendation:** Galloway Lodge Café, Fleetvale, High Street, Gatehouse of Fleet, DG7 2HP. Great food, homemade cakes and good coffee.

**Directions:** In Gatehouse of Fleet take the B796 turning by The Ship Inn, signed to Cairnsmore Nature Reserve. After two miles, Rusko Studio is on the right down a tarmac drive.  
**Accessibility:** My studio is up a flight of stone stairs.

what3words: ///objecting.mountains.flamenco



## SARAH ROGERS

20

Rusko Studio, Gatehouse of Fleet, DG7 2BS  
 T: 07724 012 001 E: [sarah@rojhedesign.com](mailto:sarah@rojhedesign.com)  
 W: [www.rojhedesign.com](http://www.rojhedesign.com) f [rojhedesign](https://www.facebook.com/rojhedesign)



My work is inspired by nature, flowers, and plants. Pieces are created in precious metal wires, small cast components, and flat sheet metal. I saw, file, shape, and solder it to form my designs. My work often incorporates stone setting, and Plique à Jour enamelling.

**What to expect:** Visitors will be greeted with a warm welcome, and are encouraged to explore a selection of frequently used tools and equipment. Sketchbooks, samples, work-in-progress, and finished pieces offer visitors the opportunity to learn more about the designing and making process.

£ £50 - £4,000

**Recommendation:** Street-lights Coffee House, 187 King Street, Castle Douglas. A lovely café with delicious, fresh homemade cakes. Dog friendly and very welcoming.

**Directions:** In Gatehouse of Fleet take the B796 turning by The Ship Inn, signed to The Cairnsmore Nature Reserve. After 2 miles, Rusko Studio is on the right.  
**Accessibility:** The studio is up a flight of stone stairs.

what3words: ///objecting.mountains.flamenco



## SCOTT MCFARLANE

# 21

The Steading, Plunton Mains, Borgue, DG6 4SP  
 T: 07944 608 277 E: [scottmcfarlane@hotmail.com](mailto:scottmcfarlane@hotmail.com)  
 W: [www.asmcf.com](http://www.asmcf.com) f Scott McFarlane Art @ scottmcfarlane\_art



NEW STUDIO

At my studio I collect observations, sketches and inspirations from the local environment and pull them together into images which reflect the textures, colours and patterns that become the voice of my paintings. My work begins outside, sitting amongst the details I love.

**What to expect:** From the garden visitors will see the landscape which inspires me. They will see finished and ongoing works, sketchbooks and materials both inside the studio and in the open air.

£ £50 - £1,000 ..... 10% discount for Friends of Spring Fling

**Recommendation:**  
 Cream of Galloway.  
 Contact Wendy Gordon  
[creamogalloway.co.uk](http://creamogalloway.co.uk)

**Directions:** Turning off the A75 towards Borgue on the A775, take first right onto the B727. Take next right after the Cream of Galloway turn. Venue half mile down this road.

**Accessibility:** Studio is down a narrow lane. There is onsite parking for 5-6 cars. Studio is accessed at the back of the house up a gravel path.

**what3words:** ///sniff.isolating.shapes



## SHEENA MCMASTER

# 22

Aldersyde, Borgue, DG6 4SH  
 T: 01557 870032 E: [sheenamcmaster@gmail.com](mailto:sheenamcmaster@gmail.com)  
 W: [www.sheenamcmaster.com](http://www.sheenamcmaster.com) f Sheena McMaster Jewellery



I make creative and elegant handmade jewellery in silver, gold and precious gemstones. Much of my work is influenced by organic forms and the natural environment to create contemporary collections, I also enjoy working with clients to design and develop individual pieces of bespoke jewellery.

**What to expect:** Visitors to my workshop will view hand tools and equipment both modern and traditional. I will be sharing my sketchbooks involved in the design process. There is a showroom where the collections will be displayed and an opportunity to purchase a piece of jewellery.

£ £55 - £3,000 ..... 10% discount for Friends of Spring Fling

**Recommendation:**  
 Borgue Hotel is in the centre of the village and is popular for food and drinks with outdoor seating if it's sunny.

**Directions:** From Kirkcudbright take the B727 signposted for Borgue. In the village continue straight and the workshop is in the last cottage on the left opposite the primary school.

**Accessibility:** The workshop is on the first floor and is accessible via a flight of stairs. The showroom is on the ground floor.

**what3words:** ///tins.galloping.coverage



## LIZ DAGG

# 23

Tarff Vale, Twynholm, Kirkcudbright, DG6 4NQ  
 T: 07502 097 746 E: [liz.dagg.ed@gmail.com](mailto:liz.dagg.ed@gmail.com)  
 f liz.dagg @ lizdagg



I am a painter/mixed media artist who endeavours to capture a personal feeling and essence of my subject. Spending time at a location is important and I am particularly drawn to seasonal changes, especially heavy seas. I enjoy experimenting with different mediums, colour, and texture.

**What to expect:** Visitors will see landscape, figurative, abstract, and unframed paintings in the house and garden studio. Cards, relevant books, sketchbooks, and other bits and pieces, along with work-in-progress will be on view. The garden and bridge area will be open to wander.

£ £2.50 - £750

**Recommendation:**  
 The Old Schoolhouse is less than 1 mile away at Ringford, DG7 2AL, catering for vegetarian and gluten free diets also.

**Directions:** From Dumfries on A75, 1 mile from Ringford, right turn to Barcaple. First house over bridge on left. From Kirkcudbright, left at Tongland Bridge, right onto A75 then left, signed Barcaple.

**Accessibility:** Please leave driveway for those who need easy access. Wheelchair access to the house but not the actual studio.

**what3words:** ///penny.reefs.firm



## IAN CAMERON-SMITH

# 24

Riverside Mills, Beaconsfield Place, Kirkcudbright, DG6 4DP  
 T: 07803 228 504 E: [ian@cameronsmithdesigns.co.uk](mailto:ian@cameronsmithdesigns.co.uk)  
 W: [www.cameronsmithdesigns.co.uk](http://www.cameronsmithdesigns.co.uk) f CameronSmithDesigns



With an emphasis on interesting and unusual design, I continue to strive to achieve perfection in both comfort and appearance with my furniture creations. I incorporate wood and steel into much of my work, pushing the boundaries of what's achievable.

**What to expect:** The focus of recent work is to create furniture that is both ergonomically and aesthetically pleasing, so come, sit, and see if I've got the right combination of form and function to suit your taste!

£ £400 - £6,000

**Recommendation:**  
 Have a seat on Odin's Throne in the garden of the Stewartry Museum - a great photo opportunity!

**Directions:** Arriving in Kirkcudbright via A711, St Mary Street, turn right onto Bridge Street, then left just before the bridge onto Beaconsfield Place. Workshop is on the left within Riverside Mills.

**Accessibility:** Workshop is on ground floor, ramp access will be provided. Toilet upstairs.

**what3words:** ///solved.saved.excuse



## KERRY SAMANTHA BOYES 25

Riverside Mill, Beaconfield Place, Kirkcudbright, DG6 4DP  
T: 07986 679 828 E: info@fakefoodworkshop.com  
W: www.fakefoodworkshop.com f fakefoodworkshop

NEW STUDIO

At the Fake Food Workshop, I blend art, culinary innovation, and sculptural finesse, crafting exquisite fake food art. It's a whimsical mix of Willy Wonka's magic and Mrs. Beeton's vintage charm. I aim to spark wonder and leave a lasting, mouthwatering impression.

**What to expect:** Step into our vintage store, a haven of pies, pastries, and more. Journey into the rear workshop, bustling with ongoing orders, racks of moulds, and walls adorned with recipes. Witness demonstrations amid creative chaos, unveiling the craft behind our fake food magic.

£ £5 - £5,000

**Recommendation:** Indulge in fresh, locally caught fish delights at Skippers Scran Van - an absolute gem by the harbour!

**Directions:** Near Kirkcudbright Bridge, spot the redbrick building across from the fishing boats' mooring. You'll find us - the corner workshop - at Riverside Mills.  
**Accessibility:** Ample parking is available outside the workshop and along the harbour road.

what3words: ///remodel.arise.kinds



## LUCY HADLEY 26

Lucy Hadley, St Mary's Street, Kirkcudbright, DG6 4DN  
T: 07595 465 258 E: hello@lucyhadley.com  
W: www.lucyhadley.com @lucyhadleyillustration

My work comes from direct experiences of nature, captured in my sketchbook as a quick sketch or through audio, film and photography I've recorded on location. I use these direct experiences as the starting point for my home and giftware collections.

**What to expect:** Visitors will see my latest British wildlife themed fabric pattern designs along with new prints, sketches and greetings cards.

£ £2.50 - £300 10% discount for Friends of Spring Fling

**Recommendation:** Circular walk along the River Dee which takes you to the Tongland Bridge and view of the Hydro building. Look out for house martins and sedge warblers.

**Directions:** On the right hand side of St Mary's Street, as you head into Kirkcudbright from Tongland, located on the corner of Bridge Street.

**Accessibility:** There is one very small step at our entrance door. The rest of the studio is all on one level. Access to the smaller back room is narrow. On-street parking right outside.

what3words: ///relations.beats.snuggle



## JULIE HOLLIS 27

Julie Hollis Art Studio, Royal Garage, 10 Mews Lane, Kirkcudbright, DG6 4HE  
T: 07887 932 101 E: julie@juliehollis.co.uk  
W: www.juliehollis.co.uk f juliehollisfineart @juliehollisfineart

I aim to capture intimate glimpses of scenes which many people would ignore, in a style that resembles contemporary realism. Woodland scenes in particular fascinate me. I tend to work with a limited colour palette, painting the effect of light and shadow on my subject.

**What to expect:** My bijou studio is housed in the offices of a disused garage. It's an intimate space which I've made my own, packed with an ephemera of canvas, paint and sketchbooks sitting alongside finished works. Originals, prints, cards and other merchandising will be available for sale.

£ £5 - £1,000 10% off paintings over £200

**Recommendation:** Go and see Claire at Jake Irving Ceramics and Café on St Mary Street for a chat, some cake and a coffee.

**Directions:** From the Selkirk Memorial and crossroads: If walking, head towards Tesco, turn right (Mews Lane) for 100m. If driving, go past Tesco, turn right (Millburn Street). Parking available.

**Accessibility:** I have a very small step into my studio. Outside displays will be fully accessible. Plentiful parking at door.

what3words: ///spirit.chugging.carefully



## ALISTAIR HAMILTON 28

17 Castle Street, Kirkcudbright, DG6 4JA  
T: 07970 825 264 E: a@alastairhamilton.co.uk  
W: www.alastairhamilton.co.uk

I use photography to create work full of pattern, detail and texture based on the natural and human-made environment. My subjects are often in plain sight but go unnoticed. I want my work to give others an idea how I see the world.

**What to expect:** A friendly welcome to my studio space that I share with my partner. There will be lots of work to see: cards, books, framed pieces. I can demonstrate and explain the hardware and software tools and techniques that I use to create my work.

£ £2.50 - £350 10% discount for Friends of Spring Fling

**Recommendation:** The Masonic Arms, next door at 19 Castle Street. CAMRA recommended for beer and 250 varieties of gin. Contact L-J on 01557 330517.

**Directions:** In Kirkcudbright: from the Harbour Square, head towards castle, turn half-left into Castle St. No 17 is on left next to Masonic Arms.

**Accessibility:** There is one very small step at our entrance door. The rest of the studio is all on one level. Access to the smaller back room is narrow. On-street parking right outside.

what3words: ///crypt.shed.mornings



## ALISON CORFIELD

29

17 Castle Street, Kirkcudbright, DG6 4JA  
 T: 07535 126 674 E: [alison@alisoncorfield.co.uk](mailto:alison@alisoncorfield.co.uk) @corfieldalison  
 W: [www.alisoncorfield.co.uk](http://www.alisoncorfield.co.uk) f AlisonCorfieldTextileArtist



I make framed abstract artworks based on worn surfaces by the sea. I like cracked, distressed, weathered, and worn away pieces; the beauty of imperfection. I create collage with mainly recycled fabrics and papers and add stitch-marks.

**What to expect:** At my studio, there are sketchbooks, experiments, stitched samples and works-in-progress, as well as the materials and media used to make my work. I will demonstrate free-machine stitch, making marks with my sewing machine.

£ £2.50 - £400 ..... 10% discount for Friends of Spring Fling

**Recommendation:**  
 Brambles Deli, 48A St Mary Street, Kirkcudbright, DG6 4DN

**Directions:** In Kirkcudbright: from the Harbour Square, head towards castle, turn half-left into Castle St. No 17 is on left next to Masonic Arms.

**Accessibility:** There is one very small step at our entrance door. The rest of the studio is all on one level. Access to the smaller back room is narrow. On-street parking right outside.

what3words: ///crypt.shed.mornings



## HEATHER DAVIES

30

Garden Cottage, 18A High Street, Kirkcudbright, DG6 4JX  
 T: 07769 612 393 E: [heather@heatherdavies.co.uk](mailto:heather@heatherdavies.co.uk)  
 W: [www.heatherdavies.co.uk](http://www.heatherdavies.co.uk) f HeatherDaviesArt



My studio paintings are semi-abstract and compliment my spontaneous en-plein-air work. Inspired by Scotland from an early age and painting in watercolour all my life, I was pleased to become a member of the RSW in 2023.

**What to expect:** A variety of framed originals, prints and cards, together with work-in-progress in watercolours, acrylics and drawings.

£ £3 - £3,000

**Recommendation:**  
 Walk from Mutehill on the outskirts of Kirkcudbright there is a gentle linear walk with spectacular views of the coast.

**Directions:** In Kirkcudbright High Street, with Broughton House on your right, go 30m further to the right, under the coaching arch and through a small gate. Studio/sunroom is at the back.

**Accessibility:** Parking on road only. Walk from the road over a cobbled area, to ground floor studio.

what3words: ///chatted.graphics.guidebook



## ANNIROSE ANSBRO

31

The Old Library, High Street, Kirkcudbright, DG6 4JW  
 T: 07793 090 697 E: [anniroseansbroart@gmail.com](mailto:anniroseansbroart@gmail.com)  
 W: [www.anniroseansbro.com](http://www.anniroseansbro.com) f anniroseansbroartist



My paintings are a playful exploration in paint. Working on wooden board, sticks, canvas and mirror, I enjoy creating a range of surfaces and textures in my work through the use of household paint, dried paint skins and wax.

**What to expect:** Situated in the beautiful artists' town of Kirkcudbright, visitors will see a working studio with a range of paintings at various degrees of completion. There will be an opportunity for visitors of all ages to join me in a collaborative painting over the weekend.

£ £1 - £3,000 ..... Offers on cards and prints

**Recommendation:**  
 Selkirk Arms is a great hotel for a meal.

**Directions:** Opposite Fisher Street, not far from the Tolbooth.

**Accessibility:** The studio has a portable ramp for the small step at the main entrance.

what3words: ///barefoot.spouting.scrapers



## LAURA BOSWELL

32

The Print House, 110 High Street, Kirkcudbright, DG6 4JQ  
 T: 07973 984 119 E: [laura@lauraboswell.co.uk](mailto:laura@lauraboswell.co.uk)  
 W: [www.lauraboswell.co.uk](http://www.lauraboswell.co.uk) f LauraBoswellPrintmaker



My prints and mixed media work explore wild landscape, especially our local coastline, with the focus on light and weather. My studies in Japan and love of drawing form the basis of my creative approach with work evoking a sense of space and scale.

**What to expect:** I will be demonstrating throughout Spring Fling, cutting and printing. Alongside linocuts and woodblock prints expect to see large mixed media works, sketchbooks, drawings, blocks and works-in-progress. Join me and learn about the techniques, tools and processes used to make my artworks.

£ £35 - £2,850

**Recommendation:**  
 Carrick Bay for beautiful views and a lovely beach especially at low tide.

**Directions:** From the A75 take the A711 into Kirkcudbright. My studio and gallery are in the large blue house at the junction of Castle Street and High Street.

**Accessibility:** Two shallow steps to the front door, studio and gallery all on one level.

what3words: ///ideal.engraving.skies



## JOSHUA MILES

33

Joshua Miles Art Studio, 57 Castle Street, Kirkcudbright, DG6 4JD  
 T: 07787 734 035 E: info@joshuamiles.art  
 W: www.joshuamiles.art f miles.away.9638 @joshua\_miles\_artist



I am a full time artist/printmaker who specialises in limited edition linocuts and monotypes. I draw my inspiration from many walks in my local area. I am drawn to capture the play of light on the landscape or water.

**What to expect:** My studio is an old shop with two large windows that are my workstations. One station is where I do my initial drawing, then cutting my lino. The other station is where I mix and roll my inks before passing works through my printing press. The Friday evening opening is a preview of my new work. Refreshments and snacks will be served.

£ £2.50 - £1,000

**Recommendation:** The Garrett Hotel across the road from me in High Street has a large beer garden and serves pub food and pizzas.

**Directions:** Old shop front on the corner of Castle Street and High Street in the centre of Kirkcudbright.  
**Accessibility:** Fully accessible, street parking for those with mobility issues – direct wheelchair access from there to the studio.

what3words: ///finders.sniff.bombshell



## PATTI LEINO

34

Studio 1, WASPS Studios, 117 High Street, Kirkcudbright, DG6 4JG  
 T: 07712 001 202 E: Patti@pattilean.co.uk  
 W: pattilean.co.uk f patti.lean @pattileanArt



Shinrin-yoku or 'taking in the forest atmosphere' is the topic of recent work that responds to forests in Galloway and Finland. Painting from direct observation and memory, my work considers the vital capacity of trees to restore and revive both human and nonhuman life.

**What to expect:** Visitors to the studio will see finished work in the form of paintings, drawings, films and assemblages, plus sketchbooks, journals and other development work. A specially-commissioned film about my work by filmmaker John Wallace will be on view.

£ £50 - £2,000 10% discount for Friends of Spring Fling

**Recommendation:** Feast café facing the harbour serves Moroccan-style light lunches and delicious home baking.

**Directions:** From the A75 take the A711 into Kirkcudbright. From St Mary St. turn right into Daar Road. WASPS studios are at the far end of the council car park.  
**Accessibility:** My studio is an old shop with the front door on street level.

what3words: ///rebounded.exulted.treaties



## LAURA DERBY

35

Studio 2, WASPS Studios, 117 High Street, Kirkcudbright, DG6 4JG  
 W: www.rugaura.com T: 07964 788 501  
 E: laura@rugaura.com f RugauraRugs @rugaura



I create heirloom-quality decorative textiles using wool, transforming them into functional rugs and stools. Native to Galloway and with a background in textiles and hand tufting I blend elements of nature with indigenous motifs creating a vibrant, colourful style spanning applied and visual art.

**What to expect:** I have a riot of colourful wool in my studio as this is my paint. I'll demo and explain the tufting technique, my collaborations, and have a selection of rugs and stools for sale including a gallery of giclee prints of past works.

£ £2.50 - £3,000 10% discount for Friends of Spring Fling

**Recommendation:** The Selkirk Arms Hotel and Restaurant – perfect for lunch or dinner – booking necessary selkirkarmshotel.co.uk

**Directions:** WASPS studios are on the High Street, two buildings up from the Selkirk Hotel, easily walkable from the centre of Kirkcudbright. Follow the SF signs and look for the bunting.  
**Accessibility:** Fully accessible studio and toilet with disabled parking round back in the council car park.

what3words: ///textiles.observers.quick



## LIZZIE FAREY

36

Studio 3, WASPS Studios, 117 High Street, Kirkcudbright, DG6 4JG  
 T: 07821 629 234 E: lizziefarey@gmail.com  
 W: www.lizziefarey.co.uk @Lizzie Farey



I make intricate sculptures from willow, birch, hazel and other local woods. My work engages with nature and I try to capture the essence of natural forms. Influences from Japan continue to inspire my attempts to capture the simplicity and beauty of the materials.

**What to expect:** Swallows, cloud forms and nature studies will all be gracing the walls of this light and airy studio. A sense of calm restoration and the aroma of recently harvested willow will gently inspire you. Semi-abstract paintings of local views will also be on sale.

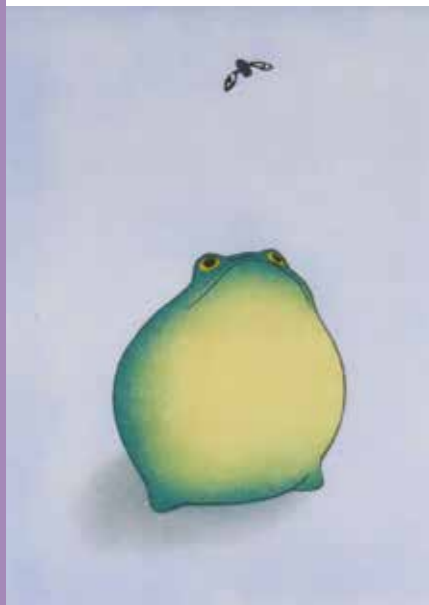
£ £65 - £1,500 10% discount for Friends of Spring Fling

**Recommendation:** St Mary's Isle. Quiet amble to the sea.

**Directions:** From the A75, take the A711 into Kirkcudbright. From St. Mary Street turn right into the High Street. WASPS Studios are a few doors up on the right.  
**Accessibility:** Unfortunately, my studio is located on the first floor accessible only by stairs, which means that there is no wheelchair access available.

what3words: ///textiles.observers.quick





### CLAIRE CAMERON-SMITH

# 37

Studio 8, WASPS Studios, 117 High Street, Kirkcudbright, DG6 4JG  
T: 07967 327 564 E: [claire@cameronsmithdesigns.co.uk](mailto:claire@cameronsmithdesigns.co.uk)  
W: [cameronsmithdesigns.co.uk](http://cameronsmithdesigns.co.uk) f [claire.cameron.smith.prints](https://www.facebook.com/claire.cameron.smith.prints)

♿ ♿ ♿ ♿ ♿ ♿ ♿

I carve woodblocks and cut stencils for transferring ink to paper in layers of colour, and every layer in every print is impressed onto the paper using hand pressure. Each one of the resulting original prints is an individually handcrafted creation.

**What to expect:** Cherry blocks, stencils, Japanese carving tools and presses, inks, and paper samples, and of course finished works, are all on show to illustrate how my hand-pulled prints progress through all the stages from concept through to framed article.

£ £2 - £330 ..... 10% off original prints for Friends of Spring Fling

**Recommendation:**  
For more background on Kirkcudbright's art history, visit the Kirkcudbright Galleries just round the corner from WASPS.

**Directions:** Take A711 into Kirkcudbright. From St Mary Street, turn right onto High Street. WASPS Studios are on right, past Selkirk Arms. Parking at rear, via Daar Road.  
**Accessibility:** If using the main front door of WASPS, my studio is accessible, and there is also an accessible toilet in the building.

what3words: ///textiles.observers.quick



### KATY QUINN

# 38

Studio 9, WASPS Studios, 117 High Street, Kirkcudbright, DG6 4JG  
T: 07766 688 251 E: [katy@eternia.net](mailto:katy@eternia.net)  
W: [gilded-image.co.uk](http://gilded-image.co.uk)

♿ ♿ ♿ ♿ ♿ ♿ ♿

Glass and precious metals have a unique, ethereal beauty in the way they respond to light. I combine them to make detailed, atmospheric, image-based work, celebrating the wonder of our shared world in all its glorious variety, its precious – and fragile – beauty.

**What to expect:** My studio contains tools, materials and works for every budget: cards, prints, 2D, 3D work, jewellery. Also 'forest-floor-to-canopy' works inspired by forays into woodlands with my macro lens; coastal imagery from Scotland & further north; plus experiments with Victorian recycled 'rescue glass'.

£ £3 - £1,500 ..... 10% for Friends of Spring Fling of Spring Fling

**Recommendation:**  
Whitehouse Gallery for a beautifully presented, ever-changing range of original Scottish art.

**Directions:** From the Selkirk Arms Hotel, walk along the High Street – the front entrance to WASPS Studios is a few doors down on the same side.  
**Accessibility:** My studio is on the ground floor and is accessible. Disabled toilet. Parking at rear via Daar Road.

what3words: ///textiles.observers.quick



### DAVID QUINN

# 39

Studio 12, WASPS Studios, 117 High Street, Kirkcudbright, DG6 4JG  
T: 07925 147 665 E: [info@davidquinnphoto.uk](mailto:info@davidquinnphoto.uk)  
W: [davidquinnphoto.uk](http://davidquinnphoto.uk) @ [davidquinnphoto](https://www.instagram.com/davidquinnphoto)

♿ ♿ ♿ ♿ ♿ ♿ ♿

NEW STUDIO

I am a fine art photographer using the natural environment to produce works ranging from large-scale panoramic landscapes down to 'microscapes' that harness natural light to pull individual elements out of nature. The result is personal and unashamedly dark.

**What to expect:** A warm welcome. See works-in-progress and the tools of my trade. Cards, archival prints, framed prints, 'panosaws' (360° panoramic jigsaws) and books. Ask questions, strike up a conversation, listen to my stories, or just wander undisturbed through my space.

£ £2 - £850 ..... 10% discount for Friends of Spring Fling

**Recommendation:**  
The Crafty Crow in Gatehouse of Fleet for the most excellent vegan/vegetarian pizza.

**Directions:** From Kirkcudbright Galleries, turn right at Daar Rd, WASPS is at the end of the council car park. WASPS is a few doors away from The Selkirk Arms.  
**Accessibility:** Stairs with handrail. Accessible toilet. Examples of work on ground floor. Contact in advance and I can come downstairs to meet you.

what3words: ///textiles.observers.quick



### ELIZABETH GAULT

# 40

Studio 13, WASPS Studios, 117 High Street, Kirkcudbright, DG6 4JG  
T: 07496 246 010 E: [rockandore@outlook.com](mailto:rockandore@outlook.com) f [RockandOreStudio](https://www.facebook.com/RockandOreStudio)  
W: [www.rockandorestudio.co.uk](http://www.rockandorestudio.co.uk) @ [rock.and.ore.studio](https://www.instagram.com/rock.and.ore.studio)

♿ ♿ ♿ ♿ ♿ ♿ ♿

NEW STUDIO

As a jewellery metalsmith, I've embraced the role of a storyteller, translating the spirit of Galloway, its landscapes, culture, and indomitable spirit, into my creations.

**What to expect:** My studio is a cosy haven of creativity where you can witness my processes with live demonstrations, explore finished pieces, works-in-progress, and gain insight into the inspirations shaping each unique creation of Rock & Ore.

£ £20 - £5,000 ..... 10% discount for Friends of Spring Fling

**Recommendation:**  
The Belfry, 39 St Mary Street, Kirkcudbright, DG6 4DU. A cosy café with delicious coffee, cakes, and breakfast/lunch options.

**Directions:** Take A711 from A75 into Kirkcudbright. Turn right from St Mary Street onto High Street. WASPS Studios are on right, beyond Selkirk Arms. Parking available at rear via Daar Rd.  
**Accessibility:** My studio is on the first floor, accessible only by stairs, which means that there is no wheelchair access.

what3words: ///crispy.sleepless.purple



## HEATHER M NISBET

# 41

The Fox Hole, Sandside Road, Kirkcudbright, DG6 4XD  
T: 07712 131 455 E: HMN@heathermnisbet.com  
W: www.heathermnisbet.com @heather.m.nisbet.art



My most recent works are mixed media and collage pieces, which have multiple layers to interest the eye and give depth to the image. I move between generally representative work, often of fishing boats and harbours, to more abstract paintings.

**What to expect:** Original paintings, prints and cards will be for sale. Visitors can look at sketchbooks and painting materials and photos showing the progress of work from the initial sketch, through the various layers of colour and marks, right up to the finished image.

£ £2.50 - £1,250

**Recommendation:** Rhubarb – St. Mary Street, Kirkcudbright. A light-filled, welcoming and stylish contemporary homeware, fashion and gifts shop.

**Directions:** Head south through Kirkcudbright on A711. Studio on right hand side of road, before you reach the end of 30mph sign.  
**Accessibility:** Fully accessible, driveway parking for those with mobility issues – direct wheelchair access from there to the studio.

what3words: ///sprawls.weekend.snug



## KIRKCUDBRIGHT GALLERIES

# G1

Kirkcudbright Galleries, St Mary Street, Kirkcudbright, DG6 4AA  
T: 01557 331276 E: kirkcudbrightgalleries@dumgal.gov.uk  
W: www.kirkcudbrightgalleries.org.uk f Kirkcudbright Galleries



Kirkcudbright Galleries is a high quality, architect designed venue, presenting the story of Kirkcudbright's art heritage in an innovative and engaging way, alongside a varying temporary historical and contemporary exhibition programme. Kirkcudbright Galleries is open all year and attracts around 50,000 visits per year. The site is run by Dumfries and Galloway Council Arts and Museums service, the site also hosts the Kirkcudbright Galleries Café which is a local enterprise.

**Directions:** Kirkcudbright Galleries is a 5 minute short walk from both the harbour square bus stop and from the main car park on the harbour square. There is some available street parking on St Mary Street.

**Accessibility:** There is lift access to all floors of the building, with an accessible toilet on the first floor. No dogs allowed except service dogs. All doors on site are manually operated, alert museum attendants if you need assistance.

10% discount for Friends of Spring Fling during event

what3words: ///ribcage.condense.erupts

## THE WHITEHOUSE GALLERY



JOHN MCENEANEY

## CANVAS & CLAY III

MIXED GROUP EXHIBITION - 27TH APRIL - 22ND JUNE 2024



TESSA WOLFE MURRAY

47 St Mary's Street, Kirkcudbright DG6 4DU  
01557 330223 info@whitehousegallery.co.uk  
WWW.WHITEHOUSEGALLERY.CO.UK



## Digital

There are many ways to connect, interact, and keep in the loop with all things Spring Fling.

**THE WEBSITE**  
Check out the website for everything you need to know about Spring Fling, our artists and our Upland year-round activities. Here you will also find our Virtual Studios and the Spring Fling shop!  
[www.spring-fling.co.uk](http://www.spring-fling.co.uk) | [www.weareupland.com](http://www.weareupland.com)

**f @**  
Get to know us! Follow and Like us on social media. We're posting daily and counting down to the main event!

**/// WHAT3WORDS**  
We're encouraging visitors to use What3Words, an app and web-based system that splits the world up into 3m squares. These squares all have a unique three-word name assigned to them. We have detailed each Spring Fling studio's unique three words on their brochure entries. This means you can use this app or type the three words into the What3Words website and will get the most accurate method of locating the studios ever!  
Visit the What3Words website at: [www.what3words.com](http://www.what3words.com)  
Here you will find out more about using both the web-based version and the app.

**Dumfries & Galloway Life**  
For all your Spring Fling news get a copy of DG Life Magazine. Or even better, why not subscribe?  
[www.dumfriesandgallowaylife.co.uk](http://www.dumfriesandgallowaylife.co.uk)



## JAY RUBINSTEIN

42

West Kirkcarswell House, Dundrennan, DG6 4QW  
 T: 07754 080 596 E: [jrubinstein@pobox.com](mailto:jrubinstein@pobox.com)  
 W: [www.jrubinstein.co.uk](http://www.jrubinstein.co.uk) f [madebyJayR](#) @ [rubinstein463](#)



I make wooden mobiles, designed to move easily in light currents, they're constructed of natural wood veneers. Most are inspired by poems or stories, I want them to be beautiful but also to carry some sense of meaning for the onlooker.

**What to expect:** Visiting my studio will be an opportunity to see a broad cross section of my recent mobiles, as well as the tools, techniques, and materials which I use.

£ £70 – £2,400

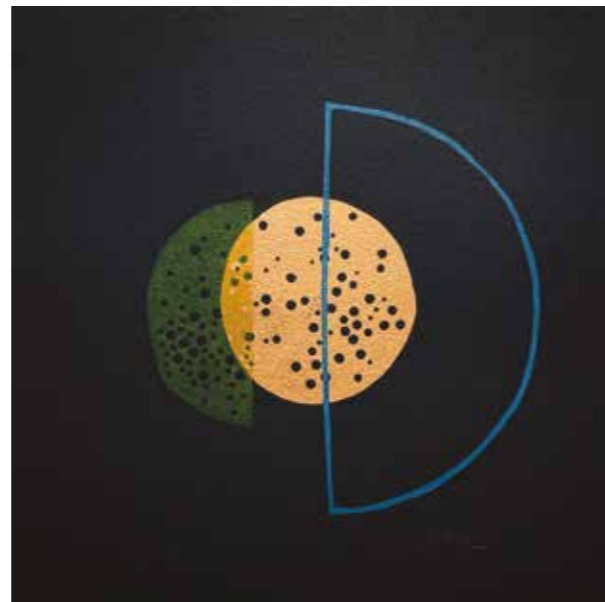
### Recommendation:

Fellcroft Loch is a beautiful place which can be reached by footpath a short distance along the road.

**Directions:** From Auchencairn go past the Wicker Man. Take the next right. From Dundrennan follow the 701 up the hill then turn left. We are signposted half a mile on.

**Accessibility:** Flat, ground level with disabled parking close by. Small gravel distance to be covered from the disabled parking to the studio.

**what3words:** ///deeply.candles.flocking



## ANNE WAGGOT KNOTT

43

Wellwood, 2 Bakery Street, Auchencairn, DG7 1RN  
 T: 07803 619 545 E: [a.waggot@gmail.com](mailto:a.waggot@gmail.com) @ [knottintheoffice](#)  
 W: [www.annewaggotknott.com](http://www.annewaggotknott.com) f [AnneWaggotKnott](#)



An artist and geographer, I produce striking, abstract fine art prints, sculpture, installations and conceptual projects which deepen our understanding of the world around us. I look for points of human disconnection with our surroundings and creatively intervene to recouple us.

**What to expect:** A warm welcome and captivating conversation; a magical vending machine from deep in the forest; despicable flirting with science; an authentic studio full of experiments and work-in-progress, and a remarkable collection of new, contemporary prints, sculptures and film.

£ £5 - £500

### Recommendation:

Auchencairn Community Garden, behind the shop, is a great place to enjoy a picnic and a few minutes downtime. Plenty of seating and a play park for the little ones.

**Directions:** Bakery St is off the lower end of the Main Street. From Community Shop, head uphill, fork right at Jubilee Lamp, Bakery St is on the right.

**Accessibility:** Back: flat access; tight corner. Front: 6 steps. Works captioned where possible. Neurodivergent / differently-abled visitors: email to book private visit if wanted.

**what3words:** ///dealings.create.rant



## SAVANNAH CROSBY

44

Wellwood, 2 Bakery Street, Auchencairn, DG7 1RN  
 T: 07547 181 943 E: [savannah\\_s\\_crosby@hotmail.com](mailto:savannah_s_crosby@hotmail.com)  
 @ [savannahcrosbyphotography](#)



I'm a photographer and my work is focused on walking, exploring themes such as mental health and the natural environment, hoping to create a sense of place and escapism with the use of metaphors and symbolism. For Spring Fling I will be walking and documenting half of the Southern Upland Way from Moffat to Stranraer.

**What to expect:** Come on an adventure! My studio will feature brand-new work, some of which will be work-in-progress. Visitors can read journals, flick through images and experience the entire journey, from start to finish.

£ £5 - £500

### Recommendation:

Auchencairn Community Shop and Café serves excellent homemade lunches including pizza, pastries, and cakes.

**Directions:** Bakery St is off the lower end of the Main Street. From Community Shop, head uphill, fork right at Jubilee Lamp, Bakery St is on the right.

**Accessibility:** Back: flat access; tight corner. Front: 6 steps. Works captioned where possible. Neurodivergent / differently-abled visitors: email to book private visit if wanted.

**what3words:** ///dealings.create.rant



## JANET IBBOTSON

45

5 Main Street, Auchencairn, DG7 1QU  
 T: 01556 640552 E: [info@janetibbotson.co.uk](mailto:info@janetibbotson.co.uk)  
 W: [www.janetibbotson.co.uk](http://www.janetibbotson.co.uk)



In my shady glass studio at the end of my flower garden, I design and make jackets and coats in beautiful woollen fabrics, all UK sourced. Each garment can be made to measure, in your selected colourway. Fine embroidery, piping and feltwork complete each piece.

**What to expect:** Working studio at the bottom of the garden where I draw all the inspiration for my embroideries and watercolours. All the clothes are produced here, so you'll see a range of garments to try on as well as examples of felting, embroidery and scarves.

£ £135 - £1,500

### Recommendation:

A quick drive along Shore Road leads to some of the prettiest beaches in the area.

**Directions:** My house is just next to the Auchencairn Store (great lunch). Go through the gate, down the drive to the end of the garden.

**Accessibility:** A wheelchair can get to the 3 steps leading up to studio. We often come out to show things to wheelchair users, and join them out in the garden with mirrors and swatches.

**what3words:** ///wishing.clips.peach



**SUZANNE STUART DAVIES**

**46**

Gelston Village Hall, Gelston, DG7 1SH  
 T: 07532 230 065 E: [suzanne@muirhillarts.co.uk](mailto:suzanne@muirhillarts.co.uk)  
 W: [www.suzannestuartdavies.co.uk](http://www.suzannestuartdavies.co.uk)



SPRINGBACK

Further explorations – Westmorland Dales, bank barns and field barns. Eskdalemuir stone circles. Flowers of the verges. Continuing fascination with landscape and history: sketches, photographs, journey books, paintings, collages, postcard books, postcard packs...

**What to expect:** Canvas & clay & more: new work and sale items. A 'pop-up' studio, to see finished work from recent collaborations and next door to see Julian's ceramic workshop. Pop up café again, in support of local funds.

£ £10 - £500 ..... 10% discount for Friends of Spring Fling

**Recommendation:**

A stroll by the River Nith in Dock Park in Dumfries. Car park, children's playground, café and a good place to walk a dog.

**Directions:** From Kirkcudbright follow the B727 to Gelston, the Village Hall is on the left. From Castle Douglas, take B736. Turn right at cross roads. Gelston Village Hall is immediately on the right.

**Accessibility:** Fully accessible – ramp from street level. No steps inside. Toilet at same level.

**what3words:** ///soonest.jaws.fussed



**JULIAN FRANCIS**

**47**

Woodend Cottage, Gelston, DG7 1SH  
 T: 01556 504 150  
 E: [julian@ofrancis1.plus.com](mailto:julian@ofrancis1.plus.com)



Working mainly on specific collaborative projects, I make high fired earthenware ceramics, both functional and sculptural, using a variety of techniques and materials.

**What to expect:** A cluttered studio with found objects, ceramic materials, pottery machines, and this year an outdoor studio with fire and smoke.

£ £10 - £500 ..... 10% discount for Friends of Spring Fling

**Recommendation:**

The Popup café in the Village Hall in support of the Village School.

**Directions:** From Castle Douglas take the B736 and then the right turn at the junction with the B727 to Gelston, look out for the Village Hall and the Spring Fling Signs.

**Accessibility:** House, garden, studio and toilet are all wheelchair accessible.

**what3words:** ///tadpoles.puzzles.searched



**ANGELA LAWRENCE**

**48**

Clience Studio, 212 King Street, Castle Douglas, DG7 1DS  
 T: 07902 301 883 E: [angela@cliencestudio.co.uk](mailto:angela@cliencestudio.co.uk)  
 W: [www.cliencestudio.co.uk](http://www.cliencestudio.co.uk) f [angelalawrencecliencestudio](https://www.facebook.com/angelalawrencecliencestudio)



I begin outdoors, catching intriguing impressions of light and shadow, often on Galloway landscape. Whether painting real or imagined locations, representational or semi-abstract, I aim to conjure up recognition: the lure of a path to follow, hill to climb or seashore to step upon and breathe.

**What to expect:** Warm welcome! Paintings-in-progress to view or chat about. An emphasis on Galloway, Western Isles, and Lake District – also a new semi-abstract 'Into the Wind' series. Prints, calendars, bargains and Title Competition. Free picture magnet for children bringing their grown-ups along!

£ £2.50 - £3,000 ..... 10% off a selection of prints for Friends of Spring Fling

**Recommendation:**

Coastal path from Balcary Bay near Auchencairn, along the cliffs to Rascarrel, if you have boots and a head for heights!

**Directions:** From Dumfries or Stranraer take A75, enter Castle Douglas by A745/A713 or B736. Clience Studio is under the clocktower on King St at crossroads with A713/Ayr and B736/Auchencairn.

**Accessibility:** A ramp into the premises up an 8cm step. Well-lit and all on the flat. Description of paintings happily given.

**what3words:** ///recap.balance.invest



**HAZEL CAMPBELL**

**49**

23 St Andrew Street, Castle Douglas, DG7 1EL  
 T: 07799 565 058 E: [hazel@painting-for-pleasure.co.uk](mailto:hazel@painting-for-pleasure.co.uk)  
 W: [www.hazelcampbell.com](http://www.hazelcampbell.com) @ [hazelkcampbell](https://www.instagram.com/hazelkcampbell)



I paint in a loose, bold style using watercolour or oil. Subject matter is usually Galloway landscape, but in a semi abstract fashion. Grocer's shelves and foreign fruit markets are a recent fascination painted on large boards using oil paint.

**What to expect:** Visitors can expect a certain amount of untidiness, lots of plants, sketchbooks and works-in-progress. Lots of work will be framed, but there will be a browser with finished but unframed work. My work station will be as usual. Gouache, ink and bamboo.

£ £200 - £850 ..... Free packs of greetings cards

**Recommendation:**

Earth's Crust artisan baker across the street. Lovely friendly staff. 36-38 St. Andrew Street, DG7 1EN.

**Directions:** My studio is between King Street and Queens street. Follow signs at town clock. Studio is up a steep stair. If this is inconvenient I can bring some work down.

**Accessibility:** Steep stair, but handrails on both sides.

**what3words:** ///elated.swimsuits.normal



## IAN MCKINNELL

50

Samphire Gallery, 149-151 King Street, Castle Douglas, DG7 1DX  
 T: 07549 323 523 E: [ian@mckinnell.me](mailto:ian@mckinnell.me)  
 W: [www.digitalartonthetherun.co.uk](http://www.digitalartonthetherun.co.uk) @ [@digitalartonthetherun](https://www.instagram.com/digitalartonthetherun)

♿️ ♿️ ♿️ ♿️ ♿️ Fri ..... SPRINGBACK

My work begins with found images of surfaces, textures and colours, sometimes much as found but more often digitally blended and transformed into abstract forms. Increasingly I transform these images with mixed media and collage to create larger pieces and add further layers of abstraction.

**What to expect:** As well as the chance to see my process and finished works on the wall I will be working on new pieces with the opportunity for you to make your own contribution if you wish. Also, free artisan chocolate with every frame purchased!

£ £10 - £600 ..... 10% discount for Friends of Spring Fling 🐦

**Recommendation:**  
 The Design Café and Gallery at 179 King St. offers fine refreshments and lovely retail therapy whilst Street Lights café at 187 is very dog, vegan and veggie friendly.

**Directions:** The gallery is easy to find on the main A713 running through Castle Douglas (King's Street), opposite Bank of Scotland. From A75, exit at roundabout to A745.  
**Accessibility:** Level access and disabled toilet.

**what3words:** ///miracle.banquets.covers



## KIM AYRES

51

Meikle Knox House, Castle Douglas, DG7 1NS  
 T: 07971 969 953 E: [kim@kimayres.co.uk](mailto:kim@kimayres.co.uk) W: [kimayres.co.uk](http://kimayres.co.uk)  
 f [kimayresphotography](https://www.facebook.com/kimayresphotography) @ [kimayresphotography](https://www.instagram.com/kimayresphotography)

♿️ ♿️ ♿️ ♿️ ♿️ ♿️ ♿️ Fri Sat Sun

I'm a creative, professional, portrait and narrative photographer, creating powerful images for individuals and businesses. Sometimes theatrical, sometimes cinematic, sometimes just observational, I use light, line and form to convey a sense of story – of something more going on than is immediately seen.

**What to expect:** Live demonstrations of how to create striking photos – on the hour every hour while open across the weekend. See examples of my work, ask questions, start discussions and let your imagination run wild. Plus exclusive special offers.

£ £400 - £4,000 ..... 10% discount for Friends of Spring Fling 🐦

**Recommendation:**  
 In House Chocolates in Castle Douglas does the best hot chocolate in the region, and has a wide range of coffees too.

**Directions:** Leave Castle Douglas on A745 to Dalbeattie, turn left after 1.2 miles. Take 1st right, up the hill. Meikle Knox is on the right near the top of the hill.  
**Accessibility:** One small step into the venue. Plenty of parking available, including up to five spaces immediately in front of the venue.

**what3words:** ///communal.cheerily.flippers



## SHEENA MCCURRACH

52

Blates Mill, Laurieston, DG7 2NB  
 T: 07957 836 509 E: [sheenapink2@gmail.com](mailto:sheenapink2@gmail.com)  
 W: [www.sheenamccurrachart.co.uk](http://www.sheenamccurrachart.co.uk) @ [sheenamccurrachart](https://www.instagram.com/sheenamccurrachart)

♿️ ♿️ ♿️ ♿️ ♿️ ♿️ Fri Sat

I am a landscape and wildlife artist. My background was in horticulture and garden design, alongside a life-long appreciation of the wild flora and fauna. These interests find expression through painting and drawing. I work predominantly in oil and pastel, with forays into printmaking.

**What to expect:** Visitors will find a busy working studio lined with vibrant and atmospheric paintings on display as well as prints, cards and painted stones. The exhibition will extend through our newly established and flower-filled garden to the conservatory with a display of larger work and refreshments.

£ £2.50 - £600 ..... 10% discount for Friends of Spring Fling 🐦

**Recommendation:**  
 The Gallery at Laurieston: a superb collection of Phil McMemey's photographs plus original paintings, prints, pottery and jewellery. Plus one of the best cafés around.

**Directions:** Head north on A713, turn left at Townhead of Greenlaw right at Laurieston crossroads. Blates Mill is 1.5 miles on right.  
**Accessibility:** Slight rise from roadside parking onto property. The studio is accessed via a small flight of three stone steps with a rail. The conservatory and garden are fairly level.

**what3words:** ///remotest.foster.crystals



## SARAH MCCUSKER

53

Grennan Farmhouse, St John's Town of Dalry, Castle Douglas, DG7 3PL  
 T: 07921 357 563 E: [smccusker568@gmail.com](mailto:smccusker568@gmail.com)  
 @ [s.mccusker](https://www.instagram.com/s.mccusker)

♿️ ♿️ ♿️ ♿️ ♿️ ♿️ Sat ..... NEW STUDIO EMERGE

I am a multimedia artist, collector, curator and hoarder. My work curates and manipulates materials found, forgotten and discarded and reimagines these to tell deeper narratives about our inner humanity and connection with our wider world. My work covers collage, sculpture and printmaking.

**What to expect:** There will be completed and in-progress art work as well as many of the found/discarded objects and materials I use in my work. There'll be opportunities to create your own piece using some of these materials, as well as tea and cake!

£ £5 - £500 ..... 10% discount for Friends of Spring Fling 🐦

**Recommendation:**  
 From the studio you can walk up to the top of the Mulloch hill with amazing views over the Glenkens and to the Rhinns of Kells.

**Directions:** From the South on the A713 continue past the Ken Bridge for just over a mile and we are on the right up a steep drive.  
**Accessibility:** The studio is on the ground floor but there are small steps into the actual space.

**what3words:** ///beginning.congested.perfected



## LEEMING & PATERSON

54

Glenhoul Brae, Dalry, DG7 3UB  
 T: 07917 102 693 E: [info@leemingpaterson.com](mailto:info@leemingpaterson.com) @ [leemingpaterson](https://www.instagram.com/leemingpaterson)  
 W: [www.leemingpaterson.com](http://www.leemingpaterson.com) f [leemingpaterson](https://www.facebook.com/leemingpaterson)

♿️ ♿️ ♿️ ♿️ ♿️ ♿️ ♿️

We are two artists celebrating 15 years of our ongoing 'Zero Footprint' immersive experience of home, place, and environment, that continues to excite and surprise on a daily basis. Showcasing a range of photographic, alternative processes and the odd installation from across the years.

**What to expect:** A smörgåsbord of our work. We will be joined by friends from D&G Woodlands & other guests to explore a range of themes around our 10 acre habitat restoration adventure. See website for updates, but expect interactive wanders, creative workshops and...!?!

£ £20 - £4,000 ..... 20% off for Friends of Spring Fling 🐦

**Recommendation:**  
 The Clachan Inn, Dalry – Great food and lovely riverside walk nearby, booking highly recommended.

**Directions:** Our studio is on the B7000, four miles north of St John's Town of Dalry. If you're heading north it's on the right hand side.  
**Accessibility:** Wheelchair ramp to access ground floor. Ample parking. Works captioned where possible. Neurodivergent/differently-abled visitors: email to book private visit if wanted.

**what3words:** ///divided.lucky.firepower



## MORAG MACPHERSON

55

The Byre, Corriedoo Forest, near Dalry, DG7 3XH  
 T: 07734 421 029 E: [info@moragmacpherson.com](mailto:info@moragmacpherson.com)  
 W: [Moragmacphersontextiles.com](http://Moragmacphersontextiles.com) f [Morag Macpherson](https://www.facebook.com/MoragMacpherson)

♿️ ♿️ ♿️ ♿️ ♿️ ♿️ ♿️

I will show naturally-dyed garments from an exhibition raising awareness of local peatlands, including a film, photography, drawings and writing. I will have new artwear and accessories for sale.

**What to expect:** At my venue, I will display garments, drawings, writings, photography and a film from a residency with Peatland Connections. This exhibition aims to raise awareness of our local peatlands.

£ £25 - £600 ..... 10% off for Friends of Spring Fling 🐦

**Recommendation:**  
 Corriedoo Forrest – on the doorstep of the Byre is the loch side and forest walk with great footpath access and woodland to explore.

**Directions:** On the A702, eight miles from Moniaive and four miles from Dalry, is Corriedoo Forest. Drive down the forest track and The Byre is the first building on the left.  
**Accessibility:** Venue accessed via parking at front of gallery. Inside, exhibition is all flat. One stair up to other section, where work is for sale.

**what3words:** ///introduce.factored.blogs



## NATALIE VARDEY

56

The Motte, Balmaclellan, DG7 3QE  
 T: 01644 420634 E: [n.vardey@gmail.com](mailto:n.vardey@gmail.com)  
 W: [www.natalievardey.com](http://www.natalievardey.com) f [natalievardey](https://www.facebook.com/natalievardey) @ [natalievardey](https://www.instagram.com/natalievardey)

♿️ ♿️ ♿️ ♿️ ♿️

I work in precious metals. Weaving tiny stitches in silver thread is absorbing and working in gold is a delight. Making rings, articulated brooches and well-balanced necklaces is satisfying and fun, but ultimately the results are well finished, functional, comfortable and unique.

**What to expect:** A cheery welcome to my temporary venue! Collections of jewellery in sparkly cabinets (for all ages), a working replica of my bench, tools, work-in-progress, techniques, samples, archive pieces, images and, if there's a lull, I may even be working.

£ £18 - £900 ..... Surprise offer for Friends of Spring Fling 🐦

**Recommendation:**  
 Balmaclellan shop supports local suppliers, has hot and cold snacks and lots more. Sat: 9-4pm, Sun: 9-11am, Mon: probably 9-4pm.

**Directions:** I'm at The Motte just for Spring Fling. It's a large wooden clad house, halfway between the shop and the hall on the main street in Balmaclellan village (off A712).  
**Accessibility:** On-street parking. Small gravel drive, two steps to the door, ramp available. All on one level inside, including toilet.

**what3words:** ///minivans.employ.admits



## FITCH & MCANDREW

57

1 Auchenvey Cottages, Corsock, Castle Douglas, DG7 3ED  
 T: 07789 735 398 E: [info@fitchandmcandrew.co.uk](mailto:info@fitchandmcandrew.co.uk)  
 W: [www.fitchandmcandrew.co.uk](http://www.fitchandmcandrew.co.uk) f [fitchandmcandrew](https://www.facebook.com/fitchandmcandrew)

♿️ ♿️ ♿️ ♿️ ♿️ ♿️ ♿️

A passion for brown mud and glistening slip has brought us together, and allowed us to make our home and workshop in this beautiful area. Our ceramics may be informed by a love of traditional pots though we make contemporary pieces with our own voices.

**What to expect:** When visiting our workshop, people can expect to find a display of finished pots in the showroom, venturing further there will be the spaces we make in and the equipment we make our pots with. The workshop will be as we use it, unadulterated chaos!

£ £20 - £2,400 ..... 10% discount for Friends of Spring Fling 🐦

**Recommendation:**  
 A stop on the A713 at the Red Kite sculpture lay by gives a lovely point for a picnic on the banks of Loch Ken and, if you are so inclined, a great swimming spot.

**Directions:** From Corsock head west on the A712 for 1.5 miles. We are on the left, opposite a white cottage.  
**Accessibility:** The showroom has one step, then two up into one part of the workshop and two down into the other part.

**what3words:** ///armrest.delighted.under



## LORNA PHILLIPS

58

1 Auchenvey Cottages, Corsock, Castle Douglas, DG7 3ED  
 T: 07775 808 202 E: [lorna.phillips1708@gmail.com](mailto:lorna.phillips1708@gmail.com)  
 W: [www.lornaphillips.co.uk](http://www.lornaphillips.co.uk) @ [lorna\\_phillips](https://www.instagram.com/lorna_phillips)

♿ P P ☹️ ♿ ..... NEW STUDIO EMERGE

I am an emerging ceramic artist. I create work that investigates a place, using the local clay as a creative means to explore the landscape of that place and the stories hidden beneath the surface.

**What to expect:** I will be showing both ceramic sculptures and functional pottery. These will be made using and experimenting with local Galloway clays. I will also be showing the processes involved in my making and sharing the archaeological research involved in my practice.

£ £20 - £500

**Recommendation:** Delicious food at the Clachan pub in Dalry.

**Directions:** From Corsock head west on the A712 for 1.5 miles. We are on the left, opposite a white cottage.

**Accessibility:** The showroom has one step, then two up into one part of the workshop and two down into the other part. There is one step up into the shed.

what3words: ///armrest.delighted.under



## SALLY JENNINGS

59

Demijohn, Glenlair Steading, Castle Douglas, DG7 3DF  
 T: 07703 742 612 E: [sallyjennings3@gmail.com](mailto:sallyjennings3@gmail.com)  
 W: [sallyjennings.co.uk](http://sallyjennings.co.uk) @ [@sallyjennings\\_art](https://www.instagram.com/sallyjennings_art)

♿ P P ☹️ ♿ Sat ..... NEW GRADUATE

My practice spans oil-painting, printmaking, and installation work, with a central focus on the fluidity of the world around us. Recently my work has been influenced by artefacts of ancient belief systems and esoteric practices found along the Scottish coastlines.

**What to expect:** Visitors will find a mixture of finished paintings and prints, alongside works-in-progress, sketchbooks and developmental pieces which you are encouraged to flick through. I will also take time to demonstrate my methods of painting, drawing or printing over the weekend.

£ £5 - £2,000 ..... A free print for first 10 Friends of Spring Fling to make a purchase 🐦

**Recommendation:** Kenmure Castle, the ruins of a once beautiful castle home with a rich history – at the top of Lock Ken.

**Directions:** Glenlair Steading is eight miles north of Castle Douglas. Please use postcode: DG7 3DF for SatNav and follow signs for Glenlair Steading.

**Accessibility:** The studio has ramps suitable for wheelchairs. On-site parking with two disabled spaces in the main courtyard. There is also an accessible public toilet within the premises.

what3words: ///megawatt.bookshop.choirs



## ADAM BOOTH

60

Pipers Forge, Kirkpatrick Durham, DG7 3HQ  
 T: 07748 537 219 E: [adam@pipersforge.com](mailto:adam@pipersforge.com)  
 W: [www.pipersforge.com](http://www.pipersforge.com)

♿ P P ☹️ ♿ Sat

I have been working as a contemporary artist blacksmith for almost 40 years and have undertaken commissions all over the world. My passion for creating original architectural ironwork and sculpture is as strong today as when I first started.

**What to expect:** Visitors will get to see all the tools and equipment used in my work, with a slide show of previous commissions and with demonstrations of hot forging taking place throughout the event.

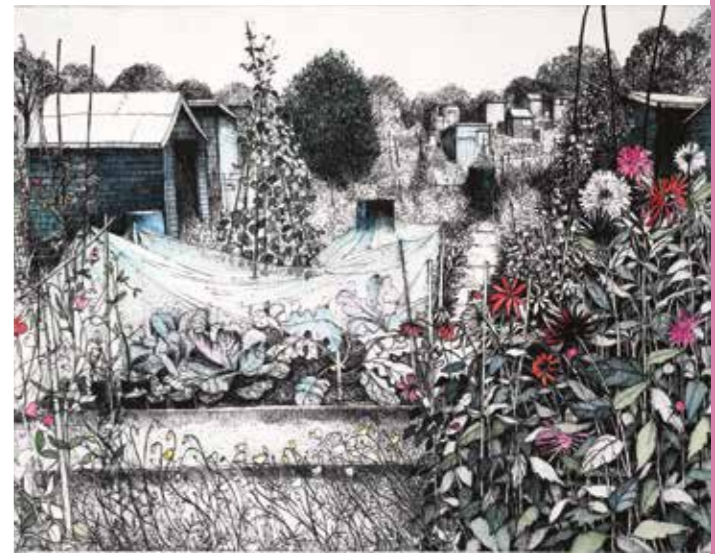
£ P.O.A.

**Recommendation:** Spring Fling Café pop-up in Village Hall providing soups, cakes, teas and coffees for the event.

**Directions:** The entrance to the forge is 50m along St Davids street on the right hand side heading from the crossroads at the centre of the village.

**Accessibility:** Easy driveway leading from the street.

what3words: ///reserve.somewhere.bronze



## PAMELA GRACE

61

The Bothy, 23 Victoria St, Kirkpatrick Durham, DG7 3HE  
 T: 01556 650498 E: [info@pamelagrace.co.uk](mailto:info@pamelagrace.co.uk)  
 W: [www.pamelagrace.co.uk](http://www.pamelagrace.co.uk) @ [pamelagraceprintmaker](https://www.instagram.com/pamelagraceprintmaker)

♿ P P ☹️ ♿ Sat

I am an artist and printmaker, living in Galloway. My work is centred on observing and drawing details from nature and larger landscapes across the seasons. I develop sketches into etchings, lithographs and larger pen and ink paintings.

**What to expect:** Work displayed will include recent paintings in watercolour, pen and ink, a wide range of editioned etchings – some hand-coloured – lithographs and mono prints. Sketchbooks and visual information on techniques and working methods will be displayed, alongside my etching press, tools and printing plates.

£ £50 - £700 ..... 10% discount on selected prints 🐦

**Recommendation:** The recreation field has nice woodland walks of a small scale, and a picnic area.

**Directions:** From Springholm on the A75 follow signposts for Kirkpatrick Durham, 23 Victoria Street is halfway up the village on the left, a short narrow lane leads to The Bothy.

**Accessibility:** Access from Church Road to recreation field with parking near The Bothy. Interior floor is a little uneven.

what3words: ///dove.newsreel.kickers



## ALLAN WRIGHT

62

29 Victoria Street, Kirkpatrick Durham, DG7 3HQ  
 T: 07946 053 514 E: [info@allanwrightphoto.com](mailto:info@allanwrightphoto.com) @ [allanwrightphoto](https://www.instagram.com/allanwrightphoto)  
 f [Allan Wright Photographic](https://www.facebook.com/AllanWrightPhotographic) W: [www.allanwrightphoto.com](http://www.allanwrightphoto.com)



As a landscape photographer 'I see my role as a receiver-transmitter'. Seeking lyricism, beauty and essence of subject. 35 years full-time professional experience: 16 book titles.

**What to expect:** My studio and home will present new material in-situ. I offer both fine art prints and published editions in both classic and abstract modes. Large format images are a speciality.

£ £2.50 - £400 ..... 10% discount for Friends of Spring Fling

**Recommendation:** Community woodland walks by The Bothy in the heart of the village.

**Directions:** 29 Victoria Street is halfway up the main road through the village as approached from Springholm and the A75. Next door to Clare Dawdry Pottery.

**Accessibility:** Wheelchair access may be tricky as there is a high step at front door. Can be overcome with a little help if required.

**what3words:** ///tourist.collapsed.tugging



## CLARE DAWDRY

63

33 Victoria Street, Kirkpatrick Durham, DG7 3HQ  
 T: 07789 348 477 E: [info@wemakepots.com](mailto:info@wemakepots.com) @ [wemakepots](https://www.instagram.com/wemakepots)  
 W: [www.wemakepots.com](http://www.wemakepots.com) f [ClareDawdryWeMakePots](https://www.facebook.com/ClareDawdryWeMakePots)



I make a range of functional and decorative stoneware pots for use in the home. Recently, my work has evolved to incorporate slip decoration, sgraffito and masking techniques on a range of tall bottles, vases and bowls which are a constant in my work.

**What to expect:** As well as my finished pots, expect to see demonstrations and examples of work in various stages of production.

£ £8 - £350 ..... Free pocket-sized pot for first 10 Friends to make a purchase

**Recommendation:** Demijohn Liquid Deli at Glenlair Steading DG7 3DF for tastings throughout the weekend.

**Directions:** From Springholm village on the A75, follow signposts for Kirkpatrick Durham. 33 Victoria Street is halfway up the village on the left hand side.

**Accessibility:** Door at street level. Doorway quite narrow. Two kerb stones outside. All on one level inside, two steps down into my studio.

**what3words:** ///outsmart.mainland.unfolds



## YULIYA LENNON

64

Old Clonyard, Colvend, DG5 4QW  
 T: 07796 898 033 E: [ylen@hotmail.co.uk](mailto:ylen@hotmail.co.uk)  
 W: [yuliyalennon.com](http://yuliyalennon.com) @ [yuliyalennon](https://www.instagram.com/yuliyalennon)



NEW STUDIO

I primarily work with oil paint, although I also incorporate wax and gold leaf into my paintings. My practice is heavily influenced by my PhD research in Medieval art. I utilise traditional sustainable pigments and materials to paint across various genres, from portraiture to landscapes.

**What to expect:** Visitors can expect to see portraits, landscapes and pieces inspired by Medieval art. I will also share some unique techniques: painting and drawing using Russian sauce, and an ancient Egyptian cold wax painting technique.

£ £3 - £1,800 .....

**Recommendation:** Clonyard House Hotel is next to the studio and has a bar, restaurant and a lovely outdoor area.

**Directions:** There will be signs to guide you from the A710 road. The studio is a granite building on the left side of the main house.

**Accessibility:** The studio is at ground level with no stairs. Parking is right next to it.

**what3words:** ///loafing.strongly.tender



## LOUISA BIRDSALL

65

Millbrae House, Rockcliffe, DG5 4QG  
 T: 07736 061 513 E: [louisabirdsalldesigns@gmail.com](mailto:louisabirdsalldesigns@gmail.com)  
 @ [louisabirdsall\\_designs](https://www.instagram.com/louisabirdsall_designs)



At my studio, you will see how I create my illustration work, from initial sketches to methods of digital art, and see the final product on its 100% recycled paper. My work is inspired by the local area and features local wildlife and natural beauty.

**What to expect:** At my studio, you will see a variety of work, poster designs, illustrated maps, and animal illustrations. Visitors can look at my sketchbooks, animation work, and designs. My studio is in a bright room and a short stroll from the beach.

£ £3 - £100 .....

**Recommendation:** A lovely walk away, in the next village of Kippford is a gorgeous welcoming waterfront café called That Tree Room at The Ark.

**Directions:** Going down into Rockcliffe, Millbrae House is on your right just after Barclay Road turn off. Drive past the house into our driveway with parking spaces, or parking in village.

**Accessibility:** Two steps up to the doorway, flat surface inside with seating and nearby toilet.

**what3words:** ///nickname.cats.steady





## PHILIPPA SINCLAIR

# 66

Colvend Public Hall, Colvend, DG5 4QD  
 T: 07769 336 879 E: philippasinclair.art@gmail.com  
 W: philippasinclair-art.com @ philippasinclairart



I paint what inspires, using water-based pigments; transferring onto the stage expressive, vivid and fluid results. Highly decorative and interpretative.

**What to expect:** There will be the tools of my trade such as brushes, paper, sketchbooks and mood boards, as well as artefacts to inspire, such as ceramics, glass, shells and favourite books. There will be finished and unfinished work on easels, textiles and installations.

£ £80 - £1,700 ..... 10% discount for Friends of Spring Fling 🐦

**Recommendation:**  
 Gem Shop Castle Douglas.  
 The best art shop in Scotland by far.

**Directions:** Colvend Public Hall is adjacent to Colvend Shop and Café on the A710 south of Dalbeattie on the coast road towards Rockcliffe and Sandyhills.

**Accessibility:** Highly accessible from the road.

what3words: ///seatbelt.slicer.bids



## KATE BENTLEY

# 67

Barnhourie Farm, Sandyhills, DG5 4PU  
 T: 07761 183 908 E: kate@katebentley.co.uk  
 W: www.katebentley.co.uk f Kate Bentley Art @ katebentley21



I am historically a 'painter of life', now mainly painting from memory in a narrative manner. I'm an elected member of both the Society of Women Artists and Royal Institute of Watercolour Painters.

**What to expect:** My location hugely influences my subject matter but equally my other passion is narrative painting developed from life experiences and my imagination. Expect to see experimental and traditional paintings coupled with a wide skill set. Including oils, print, watercolours, mixed media.

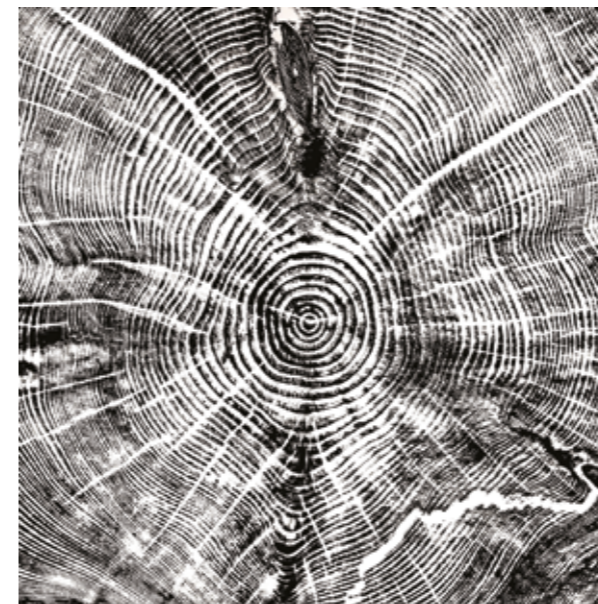
£ £2 - £6,000 ..... Free pack of cards / charity silent auction for a watercolour 🐦

**Recommendation:**  
 Bainloch Deer Park Café with outdoor seating area, great to watch deer being fed. Tours also available.

**Directions:** From Sandyhills car park head towards Colvend for 300m Turn right at sign 'Barnhourie Lodge and Farm' on the edge of golf course. Take right fork to the farm.

**Accessibility:** 4 parking spaces. All on one level. Gravel on paths. Small step over gate threshold and studio entrance.

what3words: ///deferring.rejoin.tingled



## ALAN CAMERON

# 68

Flaxmere Cottage, Southwick, DG2 8AL  
 T: 07962 274 900 E: hello@alancameron.design  
 W: www.alancameron.studio @ a\_cam\_studio



Within my printmaking practice, I work primarily with local found and reclaimed timber. My print process draws on historic techniques, and also delves into the history of the wood itself, using each year of its development as part of my mark making.

**What to expect:** There will be a selection of relief prints on show, these are printed by hand directly from the cross sections of sawn wood. I will also be doing live demonstrations on the process of burning the wood to reveal the natural grain.

£ £1 - £1,000 .....

**Recommendation:**  
 Carstramon Ancient Wood: incredible bluebells and ancient oak trees.

**Directions:** From Caulkerbush, head north passing Southwick Church on your left. Continue for one mile, after a small white cottage on your right there is a right turn.

**Accessibility:** The gallery space is accessible to all however there are two steps up into the studio.

what3words: ///silly.highbrow.height



## AILSABLACK

# 69

Merlin, Carsethorn, DG2 8DS  
 T: 07789 128 833 E: hello@ailsablack.com X @AilsaBlack  
 W: www.ailsablack.com f ailsablackart @ ailsablackart



I paint in bold colours from a home studio in the village of Carsethorn. Capturing the comings and goings of village life and observing wildlife from my studio. Creating colourful art for a growing range of creative gifts available in the UK and abroad.

**What to expect:** A large selection of paintings and prints will fill the hall with colour. There will be a range of gift ware including cards, clocks, coasters, textiles and home ware alongside original sketchbooks. A big price range means there is something for everyone.

£ £2 - £1,500 .....

**Recommendation:**  
 My local, the Steamboat Inn serves delicious meals, seafood and local beer.

**Directions:** Follow the A710 coast road to Kirkbean. Turn into Kirkbean village and onto Carsethorn. My studio is three doors before the Steamboat Inn on the right hand side.

**Accessibility:** The studio is on the ground floor but there are two steps up from the road into the garden.

what3words: ///circle.according.skid



## ARCHIE MCCALL

# 70

Kindar Mill, New Abbey, DG2 8EH  
 T: 07795 805 670  
 E: [archiemccall@outlook.com](mailto:archiemccall@outlook.com)



I have been a potter for over fifty years. Since retiring from academic life I work exclusively from my studio and continue to be fascinated by the interplay between form, glaze and surface, looking to distill elements from the natural world into a personal iconography.

**What to expect:** In my house I will show a new range of decorative work and, for the first time, a series of monochromatic pieces. I will have a body of work-in-progress in the studio and will be available to explain development processes and techniques.

£ £30 - £300 ..... 10% reduction for Friends of Spring Fling 🐦

**Recommendation:** Abbey Cottage Tearoom, 26 Main Street, New Abbey.

**Directions:** From Dumfries follow A710 to New Abbey village. Pass Sweetheart Abbey then take first right into the Church lane. Kindar Mill is on your left beyond the church.  
**Accessibility:** All work on display in the house will be on ground floor level. One step up into the studio can be ramped if necessary.

**what3words:** ///soaks.baroness.ambient



## ELSPETH HART

# 71

Shambellie House, New Abbey, DG2 8HQ  
 T: 07976 291 932 E: [elspeth.c.hart@gmail.com](mailto:elspeth.c.hart@gmail.com)  
 W: [www.elspethhart.com](http://www.elspethhart.com) @ [@elspeth.hart](https://www.instagram.com/elspeth.hart)



NEW STUDIO

I am a studio potter making both functional and sculptural work. I am influenced by the land and the ways we inhabit it. I use vessels as the starting point for all my work which references functional pottery both ancient and contemporary.

**What to expect:** As well as exhibiting finished work I will share my creative process through sketchbooks, objects, and work-in-progress.

£ £20 - £500

**Recommendation:** New Abbey Corn Mill is an 18th century mill, which does guided tours about milling oatmeal. Booking recommended.

**Directions:** Taking the A170 from Dumfries, Shambellie House is on your right shortly before New Abbey.  
**Accessibility:** There is a short flight of stairs from the entrance which has a stair lift. There are accessible toilets.

**what3words:** ///rises.picturing.sensitive



## CAROLINE MCGONIGAL

# 72

Shambellie House, New Abbey, DG2 8HQ  
 T: 07565 966 069 E: [carolinemcgonigalartist@gmail.com](mailto:carolinemcgonigalartist@gmail.com)  
 W: [www.carolinemcgonigalartist.co.uk](http://www.carolinemcgonigalartist.co.uk) f [CarolineMcGonigalArtist](https://www.facebook.com/CarolineMcGonigalArtist)



SPRINGBACK

I am a professional artist who grew up in Kirkcudbright and have always been influenced by water and the ephemeral in nature. My paintings are created using thin layers of oil paint to add interest and depth and they often appear semi-abstract.

**What to expect:** Come and learn about the unusual materials I use, as well as the methods I employ in creating my work. A range of work will be on show from cards and small giclee prints to all sizes of original paintings.

£ £3 - £1,000

**Recommendation:** The Steamboat Inn at Carsethorn is such a lovely place for a meal and has the most stunning location overlooking the water.

**Directions:** Taking the A170 from Dumfries, Shambellie House is on your right shortly before New Abbey.  
**Accessibility:** There is a short flight of stairs from the entrance which has a stair lift. There are accessible toilets.

**what3words:** ///rises.picturing.sensitive



## EMMA WATSON

# 73

Shambellie House, New Abbey, DG2 8HQ  
 T: 07387 295 449 E: [emmavisca@btinternet.com](mailto:emmavisca@btinternet.com) @ [emmavisca.art](https://www.instagram.com/emmavisca.art)  
 W: [www.saatchiart.com/emmavisca](http://www.saatchiart.com/emmavisca) f [Emma Visca Art](https://www.facebook.com/EmmaViscaArt)



I am an international selling abstract expressionist artist, painting mainly on large canvas with acrylic paints. My art is my life story and comes from my felt sense, partnered with studying a masters in mindfulness, I try to tap into my subconscious.

**What to expect:** You can expect to see a variety of my art work and writings of my journey through life. I will also have cards and tote bags on sale. I can talk visitors through my art process and if interested also my mindfulness practice.

£ £100 - £3,000

**Recommendation:** Criffel is a lovely place for a walk or hike to the top.

**Directions:** Taking the A170 from Dumfries, Shambellie House is on your right shortly before New Abbey.  
**Accessibility:** There is a short flight of stairs from the entrance which has a stair lift. There are accessible toilets.

**what3words:** ///rises.picturing.sensitive



## RACHEL ASHCROFT

74

Killymingan Farm, Kirkgunzeon, DG2 8LE  
 T: 07934 117 046 E: [womanofthewoods2021@gmail.com](mailto:womanofthewoods2021@gmail.com)  
 W: [womanofthewoods.org](http://womanofthewoods.org) f [dgwomanofthewoods](https://www.facebook.com/dgwomanofthewoods)



I make unique objects and furniture from the naturally abundant timber that shapes our local landscape.

**What to expect:** Visitors can expect a warm welcome in my bright open workshop space. You will see the timber I work with, the machinery I use, my experiments and works-in-progress along with finished work. I will also be demonstrating spoon carving and other creative processes.

£ £12 - £500 ..... 10% off for Friends of Spring Fling. Free prize raffle 🐦

### Recommendation:

Loch Arthur Farmshop, Beeswing. Great cake, coffee and lunches! A Camphill Community with their own creamery, bakery and butchers.

**Directions:** From A711 turn into Kirkgunzeon at Lotus Electrical. Follow road (signposted Crocketford) and turn left after village up single track, white farmhouse at the top.

**Accessibility:** Studio on ground level with slope to entrance. Lots of space for parking, but courtyard has some uneven ground, so please take care.

**what3words:** ///billiard.courts.tickling



## WILLIAM SPURWAY

75

Solway House Studios, The Crichton, Bankend Rd, Dumfries, DG1 4TA  
 T: 07443 562 129 E: [w.spurway@btinternet.com](mailto:w.spurway@btinternet.com)  
 @ [william.spurway](https://www.instagram.com/william.spurway)



My work remains of the landscape but currently focuses on aspects that catch my eye when out walking: magnificent oaks, a grey mare in a field, bulls on a hillside, shape-shifting clouds. Pieces include pen and ink drawings made in situ to large-scale oils.

**What to expect:** You will see work in a variety of media including pen and ink sepia drawings, oils and prints using drypoint or carborundum techniques. Also on display, will be works-in-progress, sketchbooks, objects gathered on walks and the tools of my trade.

£ £25 - £800 ..... A set of postcards for each Friend of Spring Fling 🐦

### Recommendation:

Explore the historic Crichton grounds with magnificent views and many unusual trees and shrubs sent from Calcutta's Botanical Gardens in the 1920s.

**Directions:** From Dumfries take the B725 signposted to Glencaple. At the Gatehouse, turn left into the Crichton grounds and follow the Spring Fling signs to the car park opposite Solway House.

**Accessibility:** All studios are on the ground floor with a ramp for wheelchair access. Toilet not wheelchair accessible.

**what3words:** ///sourcing.backfired.ounce



## JOANNA SHENNAN

76

Solway House Studios, The Crichton, Bankend Rd, Dumfries, DG1 4TA  
 T: 07842 723 786 E: [joshennan@icloud.com](mailto:joshennan@icloud.com)  
 @ [joannashennan](https://www.instagram.com/joannashennan)



Seasonal change, shadows, textures, patterns and shapes found in nature are reflected through my own interpretation within textiles, paper and plaster arranged in both 2D and 3D forms.

**What to expect:** Within my working studio, experimental mixed media samples and sketchbooks will be available to investigate. These are a record and tool to help progress my ideas. Completed artists books, 3D forms, mixed media panels will be on display along with friendly conversation!

£ £2.50 - £300 ..... I will have complimentary postcards of my work available 🐦

### Recommendation:

The Boathouse Café in Glencaple, offering delicious food and drinks. Quayside, Glencaple DG1 4RE.

**Directions:** From Dumfries take the B725 signposted Glencaple turning left into the Crichton Campus at the Gatehouse. Then follow the Spring Fling signs to the car park and studio.

**Accessibility:** All studios are on the ground floor with a ramp for wheelchair access. Toilet not wheelchair accessible.

**what3words:** ///sourcing.backfired.ounce



## ANDREW ADAIR

77

Solway House, The Crichton, Bankend Road, Dumfries, DG1 4TA  
 T: 01387 262074 E: [awadair@btinternet.com](mailto:awadair@btinternet.com)  
 W: [axisweb.org/artists/andrewadair](http://axisweb.org/artists/andrewadair) @ [Adair8821](https://www.instagram.com/Adair8821)



I always try to maintain a playful approach, keen to explore the happy accident and veer off wherever it may lead. This, and the need to allow the material to be clearly manifest in the finished work, is key to my process.

**What to expect:** Visitors will see a variety of work which they will be encouraged to handle and there will be the customary 'guess the weight of the pot' competition.

£ £10 - £500 ..... 'Guess the Weight of the Pot' competition 🐦

### Recommendation:

The Crichton Central café just by the Solway House Studios, serving good food all day with outdoor seating or bright airy rooms with comfy chairs.

**Directions:** From Dumfries take the B725 signposted to Glencaple. At the Gatehouse, turn left into the Crichton grounds and follow the Spring Fling signs to the car park opposite Solway House.

**Accessibility:** All studios are on the ground floor with a ramp for wheelchair access. Toilet not wheelchair accessible.

**what3words:** ///pulp.tonic.ambitions



## BEA LAST

# 78

Studio 2, Gracefield Arts Centre, 28 Edinburgh Rd, Dumfries, DG1 0TQ  
 T: 07703 458 182 E: [b.last@hotmail.co.uk](mailto:b.last@hotmail.co.uk)  
 W: [www.bealast.com](http://www.bealast.com) f [Bea Last](#) @ [bea\\_last\\_artist](#) X [@BeaLast](#)



CREATE

My creative practice is process led, using materials that have been salvaged, recycled, found, donated or re-purposed. I explore drawing in its broadest sense creating what I refer to as sculptural drawing installations. Experimentation is vital in order to keep it moving forward.

**What to expect:** Visitors are welcome to come and chat with me about my practice. You will be able to see experimental work I have been researching in the form of a sculptural drawing installation along with examples of my creative process.

£ N/A ..... 10% off for Friends of Spring Fling

**Recommendation:**  
 Gracefield Craft Shop:  
 A great place to find creative products from local, professional artists and makers.

**Directions:** To Gracefield Arts Centre: From Dumfries train station, head along Lovers Walk, turning right at lights. Gracefield is signposted up on the right.  
**Accessibility:** The venue is fully accessible for all those with mobility issues.

what3words: ///prompts.birthdays.magic



## TRICIA BARNA

# 79

Falu Studios Gallery, Douievale, Annan Road, Dumfries, DG1 3SE  
 T: 07497 037 994 E: [tricia@falustudios.com](mailto:tricia@falustudios.com)  
 W: [www.falustudios.com](http://www.falustudios.com) f [triciabarna.art](#) @ [triciabarna.art](#)



I paint semi-abstract landscapes and floral works, a mixture of abstraction and representation of my surroundings. I predominantly use acrylics, working in layers, building up textures and underlying colours using brushes and palette knives, scraping back and rebuilding layers to create a depth of colour.

**What to expect:** A warm welcome and refreshments. Our smaller gallery will have a studio set-up with my tools, sketchbooks and work-in-progress. Our main gallery will showcase a range of my original works plus prints and cards.

£ £2 - £1,700 ..... 10% for Friends of Spring Fling and further discounts

**Recommendation:**  
 Shoreside, Powfoot,  
 Annan. Charming,  
 seafront holiday cottage.  
 Sleeps 5, dogs welcome!  
[shoreside-cottage.co.uk](http://shoreside-cottage.co.uk)

**Directions:** Just as you approach Dumfries on the A75 from Annan, we're next to Garden Rooms on the right side of the road just before Starbucks, Shell garage and roundabout.  
**Accessibility:** We have wheelchair access directly from the large on-site parking area.

what3words: ///agents.burst.small



## HEATHER ARMSTRONG

# 80

Linnfield, Torthorwald, DG1 3SA  
 T: 07850 320 553 E: [heather@linnfield.co.uk](mailto:heather@linnfield.co.uk)  
 W: [www.heatherarmstrongstudio.co.uk](http://www.heatherarmstrongstudio.co.uk)



I hand-build with clay creating sculptural ceramic forms. Each piece starts with a sketchy plan, the path twisting and turning as I pull together form and texture. Surface decoration is achieved by the transformative alchemy of smoke and fire on the ceramic surface.

**What to expect:** In my small studio I will be working on pieces at various stages of my process. My electric kiln will be newly fired ready to open. Smoke-fired ceramic will be emerging from the ashes of fire. There will be a gallery of completed work.

£ £10 - £300 ..... 10% discount for Friends of Spring Fling

**Recommendation:**  
 Drummur Farm Ice-Cream  
 Shop on Clarencefield  
 Road near Collin sells  
 a delicious range of  
 homemade ice-cream.

**Directions:** Travelling on A709 from Dumfries towards Lochmaben turn right in village of Torthorwald. Follow road towards Mouswald for 1.2km. Studio is a white house, Linnfield, on left.  
**Accessibility:** Studio is on ground level accessible from adjacent parking area. Door width is adequate for wheelchair access.

what3words: ///alive.awake.bells





## ALEXANDER ROBB

# 81

2 Windsover Cottage, Dunscore Rd, Auldgirth, DG2 0UB  
 T: 01387 740502 E: [info@windsoverstudio.co.uk](mailto:info@windsoverstudio.co.uk)  
 W: [www.windsoverstudio.co.uk](http://www.windsoverstudio.co.uk)



I am a figurative artist. My main influences are the Glasgow Boys and the Scottish Colourists. My work is based on accurate drawing from close observation of the subject, rich colour and strong tonal contrasts.

**What to expect:** Visitors will see a variety of work in oils gouache and pastel.

£ £50 - £2,000 ..... 10% discount for Friends of Spring Fling

**Recommendation:** Morton Castle, Closeburn is worth a visit.

**Directions:** From the Dumfries bypass take the A76 north. After 8 miles turn left after a sign for Auldgirth. The Studio is on that road on the right after 1/2 mile.

**Accessibility:** Ground floor accessible, stairs to upper floor.

**what3words:** ///deflection.mixes.float



## HUGH BRYDEN

# 82

2 Windsover Cottage, Dunscore Road, Auldgirth, DG2 0UB  
 T: 07984 454 667 E: [hughdbryden@btinternet.com](mailto:hughdbryden@btinternet.com)  
 W: [www.hughbryden.com](http://www.hughbryden.com)



I work in printmaking, illustration and artists books and have recently returned to painting, primarily in acrylic-on-panel on a small scale.

**What to expect:** I am sharing Sandy Robb's studio so visitors can see the different ways we work. I have set up one of my intaglio presses in the studio so they can see our differing approaches to printmaking and experience making a small print.

£ £10 - £800 ..... 10% discount for Friends of Spring Fling

**Recommendation:** Thomas Tosh in Thornhill has a great café, gifts, books and much more.

**Directions:** From the Dumfries bypass take the A76 north. After 8 miles turn left after a sign for Auldgirth. The Studio is on that road on the right after 1/2 mile.

**Accessibility:** Downstairs completely accessible, upstairs has stairs with a turn.

**what3words:** ///deflection.mixes.float



## RUTH ELIZABETH JONES

# 83

Ainsworth Cottage, Ayr Street, Moniaive, DG3 4HP  
 T: 07979 444 687 E: [ruth@jonescc.com](mailto:ruth@jonescc.com) @ [@ruth\\_elizabeth\\_jones](https://www.instagram.com/ruth_elizabeth_jones)  
 W: [ruthelizabethjones.com](http://ruthelizabethjones.com) f [Ruthelizabethjones](https://www.facebook.com/Ruthelizabethjones)



I make clay vessels, coil-building and throwing with meditative focus. I experiment with clays and smoke-firing techniques using sustainably sourced shavings resulting in uniquely textured and light-responsive surfaces.

**What to expect:** Showing in my studio in the heart of Moniaive again this year, visitors will be able to see a selection of hand-built and thrown work, materials and tools used in the making and firing, including my smoking bins, and a studio sale section.

£ £30 - £1,500 ..... 10% off purchases over £100

**Recommendation:** The Hive on Moniaive High Street is a community hub with local crafts, clothes, books and community information.

**Directions:** Entering Moniaive on the A702, follow the road through village, go to the left at the clock tower onto Ayr Street (B729) the studio is 100 yards on the right.

**Accessibility:** I have a raised threshold at the studio door and the space is narrow so will be difficult for large wheelchairs.

**what3words:** ///joke.worked.goodnight



## DEBORAH CAMPBELL

# 84

The Rooks Gallery, Toll House, Keir Road, Penpont, DG3 4BP  
 T: 07775 665 771 E: [deborah@deborahcampbell.com](mailto:deborah@deborahcampbell.com)  
 W: [www.deborahcampbell.com](http://www.deborahcampbell.com) f [deborahcampbell02](https://www.facebook.com/deborahcampbell02)



SPRINGBACK

I create intricate contemporary textiles inspired by Scotland's coastal landscape and birdlife. I interpret the landscape through print, making unique handprinted fabrics using various printing techniques. Then using free motion machine embroidery as my drawing tool, I combine the fabrics to create fine art textiles.

**What to expect:** I will be exhibiting my new collection of fine art textiles and mixed media studies from trips to Iona and Mull. Demonstrations of the printing techniques I use will be on show, with the opportunity to have a go – accessible to everyone including children.

£ £3.50 - £1,000 ..... 10% discount for Friends of Spring Fling

**Recommendation:** The Three Villages Café, attached to The Rooks Gallery in Penpont. Great cakes and coffee. Not open on Sunday.

**Directions:** Heading north out of Thornhill follow signs to Penpont on the left, in two miles go past Penpont war memorial and the gallery is first on the left.

**Accessibility:** Part wheelchair access (e.g. wheelchair access to gallery but not workshop or toilets) Parking is on the street.

**what3words:** ///tall.agency.splendid



## ALISON MACLEOD

# 85

Old School Thornhill, Station Road, Thornhill, DG3 5DF  
 T: 07786 434 981 E: [alison@alisonmacleod.com](mailto:alison@alisonmacleod.com)  
 W: [www.alisonmacleod.com](http://www.alisonmacleod.com) @ [alisonmacleodjewellery](https://www.instagram.com/alisonmacleodjewellery)



I make jewellery inspired by antique treasures and the stories they tell. Each piece is individually crafted in traceable gold with a focus on detail. A love of pattern is central to my designs, inspired by the Victorian aesthetic but with a modern, balanced approach.

**What to expect:** Visit me in my new Atelier at Old School Thornhill, an inspiring space encompassing my unique style. My workbench gives an insight into my making process, crowded with hammers, files and forming tools. You might even be inspired to commission your own bespoke jewellery piece.

£ £350 - £9,000

**Recommendation:** Thomas Tosh for their generous slices of cake.

**Directions:** From Dumfries, turn right at Thornhill cross and follow the road round. Old School Thornhill (OST) is located in the old Wallace Hall Primary School building, opposite the new school.

**Accessibility:** Wheelchair accessible. High level displays can be brought down on request.

**what3words:** ///persuade.tokens.badminton



## KAZ ROBERTSON

# 86

Old School Thornhill, Station Road, Thornhill, DG3 5DF  
 T: 07779 602 148 E: [kaz\\_m\\_r@hotmail.com](mailto:kaz_m_r@hotmail.com) @ [kazrobertsonjewellery](https://www.instagram.com/kazrobertsonjewellery)  
 W: [www.kazrobertson.co.uk](http://www.kazrobertson.co.uk) f [kazrobertsonjewellery](https://www.facebook.com/kazrobertsonjewellery)



I'm a resin jeweller creating original, colourful, handmade resin jewellery.

**What to expect:** I'll be showing new work alongside some KAZ favourites, and I'll have my box of end-of-line pieces too. As I won't be in my own studio I'll bring some work-in-progress to help explain how I produce my jewellery.

£ £18 - £475

10% discount for Friends of Spring Fling

**Recommendation:** Drumlanrig Castle for the 'way-marked' walks around the beautiful grounds and woodlands. You can enjoy some cake in the tea room afterwards.

**Directions:** From Dumfries, turn right at Thornhill cross and follow the road round. Old School Thornhill (OST) is located in the old Wallace Hall Primary School building, opposite the new school.

**Accessibility:** Wheelchair accessible. High level displays can be brought down on request.

**what3words:** ///persuade.tokens.badminton



## SAMUEL SPARROW

# 87

Old School Thornhill, Station Road, Thornhill, DG3 5DF  
 T: 07707 326 000 E: [hello@samuelsparrow.com](mailto:hello@samuelsparrow.com)  
 W: [samuelsparrow.com](http://samuelsparrow.com) @ [@sparrowandco](https://www.instagram.com/sparrowandco)



I produce wheel-thrown tableware and objects from my studio in Thornhill. My work aims to celebrate simplicity and functionality, highlighting the inherent beauty of objects that are made by hand.

**What to expect:** Pots from my recent firing will be displayed in my new studio – within the recently redeveloped Old School Thornhill. There will also be the opportunity to see work in various stages of production and the tools and equipment I use daily.

£ £25 - £150

**Recommendation:** Old School Thornhill has been redeveloped as an innovative, designed, community asset, benefiting Thornhill and the surrounding communities.

**Directions:** My new studio is located within the recently redeveloped Old School Thornhill – opposite Wallace Hall Academy.

**Accessibility:** My studio is located on the ground floor and is fully accessible.

**what3words:** ///repaying.tightrope.classic



## GYLLIAN THOMSON

# 88

Garfell, Corstorphine Road, Thornhill, DG3 5NB  
 T: 07944 420 373 E: [gyl15@yahoo.co.uk](mailto:gyl15@yahoo.co.uk) @ [gyllianthomsontapestries](https://www.instagram.com/gyllianthomsontapestries)  
 W: [www.gyllianthomsontapestries.co.uk](http://www.gyllianthomsontapestries.co.uk)



My work is vibrant and colourful. I am a traditional tapestry weaver using an upright scaffold loom. Initially I paint on paper to create my designs. These are then translated into my work using cotton, wool, linen, acrylic and more.

**What to expect:** A warm welcome awaits in my studio and beyond into the house to see larger pieces. Work will be in progress on my loom, and you will be able to discuss the tools of the trade and view my colourful array of yarns.

£ £2.50 - £6,000

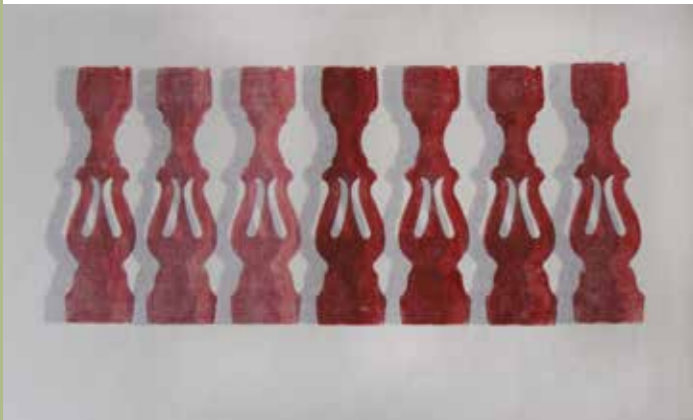
10% discount for Friends of Spring Fling

**Recommendation:** Stirk Brothers on Drumlanrig Street in Thornhill is a boutique whisky and spirits shop specialising in hard to find products.

**Directions:** At the roundabout coming from Dumfries take the 3rd exit. Go straight up and Corstorphine Road is the first right. My studio is the first bungalow on your right.

**Accessibility:** My studio is on the level. To view larger works within the house there are 4 steps then another 4 steps to get there.

**what3words:** ///eyelid.uppermost.curtains



## HETAL CHUDASAMA

# 89

**Blacknest Studios, Blacknest House, Thornhill, DG3 5DW**  
**T: 07440 436 977 E: lateh111@gmail.com**  
**W: www.hetalchudasama.net f hetal.chudasama.790**



NEW STUDIO

I'm a multi-disciplinary artist currently experimenting with multi-block woodcut printmaking technique. My studio space is a laboratory where a variety of expressions and mediums are brought together to create unique compositions.

**What to expect:** My studio space is an old stable building where I house a makeshift woodcut printmaking workshop. Alongside the tools and objects I use to create my works, visitors can expect to see works-in-progress, a finished body of works, an installation, and enjoy a reading space.

£ £10 - £1,500 ..... 10% discount for Friends of Spring Fling and more! 🐦

**Recommendation:**  
 Thornhill High Street, visit newly opened state-of-the-art whisky shop – Stirk Brothers.

**Directions:** From Thornhill roundabout take first exit E Morton St. Continue on Station Road, turn right at Thornhill golf course, keep right past the golf course parking space, turn left.

**Accessibility:** Cobble stones outside. There is a one foot high step to enter the main space. It is a partially accessible space for wheelchair usage.

**what3words:** ///villa.medium.utensil



## ANNE BUTLER

# 90

**Ferndale Studio, Durisdeer, DG3 5BJ**  
**T: 07885 052 782 E: annecbutler@gmail.com W: Annebutlerart.com**  
**f Annebutlerart @ Annebutlerart**



Like many artists I take my inspiration from nature. I work on large canvases with acrylic paint. My work has become more abstract. I often find colours in nature quite exhilarating. Many of these colours find their way onto the canvas.

**What to expect:** My studio is small for the size of the work. You will see work-in-progress and all my tools. It is not a tidy studio. I manage to get paint everywhere!

£ £75 - £2,000 ..... 20% off to SFF when spending £500 or more 🐦

**Recommendation:**  
 Lean Bean for good coffee. 43 W Morton St, Thornhill, DG3 5NF.

**Directions:** From south, take A702 at Carronbridge. After 3 mls sign to Durisdeer. From north, take A702 south from A74. After 10mls sign to Durisdeer. Park in the village square.

**Accessibility:** A few steps into the studio.

**what3words:** ///outlooks.tunes.fountain



## CAMPLE LINE

# G2

**Cample Mill, Cample, Thornhill, DG3 5HD**  
**T: 01848 331000 E: info@campleline.org.uk**  
**W: campleline.org.uk f campleline @ campleline**



We bring the work of some of the most thought-provoking artists and filmmakers practicing today to our rural setting, for audiences and visitors from both near and far to encounter, experience and enjoy. Entry to our exhibitions is free.

Over Spring Fling 2024, visitors will be able to catch Gabriella Boyd's exhibition 'Presser', which will include a group of new works on canvas and paper painted over the last year. Gabriella's paintings explore the interactions and bonds that tether us both loosely and tightly to each other and to the world around us. Hovering between figuration and abstraction, her paintings give visual form to sensations, memories, stories and spaces that we hold in the mind, and she has spoken of her paintings as attempts to translate sensory experience into image. Gabriella (b. 1988, Glasgow) lives and works in London.

**Directions:** We are located in Mid-Nithsdale, sitting 1.5 miles from the A76. We are two miles south of Thornhill, and about 15 miles north of Dumfries. You will find us at Cample Mill, immediately overlooking the beautiful Cample rail viaduct.

**what3words:** ///loosens.coconuts.credible

**SPRINGFLING**  
 Scotland's Premier Art and Craft Open Studios Event

# Get involved in 2025!

**We are looking for sponsors and partners for Spring Fling 2025. If you have a passion for rural creative events and communities, and would like to connect your business, please get in touch.**

Calling all... Artists & Makers / Venues / Advertisers / Galleries / Sponsors / Tourism partners / Patrons / Press partnerships / Donors / Local businesses / Creative Partnerships / Influencers / Emerging Artists / Makers / Bloggers / New Graduates / Neighbouring Artists / Artists with connection to D&G, Upland or Spring Fling

Contact Joanna Jones: [joanna@weareupland.com](mailto:joanna@weareupland.com) – for a chat.



## RUTH CLAYTON

# 91

Upper Annandale Parish Church, Church Place, Moffat, DG10 9ES  
 T: 07742 543 371 E: [hello@ruthclaytonartist.com](mailto:hello@ruthclaytonartist.com)  
 W: [ruthclaytonartist.com](http://ruthclaytonartist.com) f [ruthclayton.artist](https://www.facebook.com/ruthclayton.artist)



NEIGHBOUR

I am a watercolourist who loves to capture the energy of the sea. I work large and use special techniques to achieve different textures, including clingfilm, a toothbrush, a palette knife and a spray bottle. I love to let the paint 'do its own thing'.

**What to expect:** It's all in the planning! I use my own planning process before painting. See examples of this process. The colour I use most is blue, so visit me and immerse yourself in a cool blue experience including the sound of the sea for added authenticity.

£ £30 - £700

**Recommendation:**  
 The Moffat Toffee shop - home of the distinctive local delicacy, and offering many other sweet treats.

**Directions:** From the A74(M) take the A701 towards Moffat. The church and hall are on the left as you enter the town.  
**Accessibility:** Full wheelchair access, disabled toilets.

what3words: ///proof.nipped.exploring



## RICHARD FOSTER

# 92

Upper Annandale Parish Church, Church Place, Moffat, DG10 9ES  
 T: 07796 925 824 E: [rfetchings@gmail.com](mailto:rfetchings@gmail.com)  
 W: [www.rfetchings.co.uk](http://www.rfetchings.co.uk) @ [richardfoster63](https://www.instagram.com/richardfoster63)



NEIGHBOUR NEW STUDIO

The everyday aspects of the Northern landscape are the focus of my etchings and drypoint prints. Trees and vegetation shaped by the northern climate are a constant theme of my work. Currently I am exploring Neolithic monuments like Cairn Holy, through print and embossing techniques.

**What to expect:** You will be able to experience me printing etched and drypoint prints. You can also try your hand at creating an embossed print, to be combined with others to create a record of the Spring Fling weekend. Prints will also be displayed and for sale.

£ £65 - £350 10% off all prints for Friends of Spring Fling

**Recommendation:**  
 The Grey Mare's Tail Waterfall and Nature Reserve, including one of the highest waterfalls in the UK.

**Directions:** From the A74(M) take the A701 towards Moffat. The church and hall are on the left as you enter the town.  
**Accessibility:** Full wheelchair access, disabled toilets.

what3words: /// proof.nipped.exploring



## REBECCA J WOODS

# 93

8 Nethermiln Meadow, Moffat, DG10 9QG  
 T: 07930 246 882 E: [rjwceramics@gmail.com](mailto:rjwceramics@gmail.com) @ [rebeccajwoods](https://www.instagram.com/rebeccajwoods)  
 W: [www.rebeccajwoodsceramics.com](http://www.rebeccajwoodsceramics.com) f [rjwoodsceramics](https://www.facebook.com/rjwoodsceramics)



NEW STUDIO

I make decorative and useful stoneware pottery for the home: bud vases, ginger jars, moon jars, bowls, mugs, pouring bowls, brooches. I've created new glazes in soft colours of mauve corncockle and Seaglass. My most recent work focuses on the Mishima technique, using handmade stamps.

**What to expect:** You're invited to wander through my workshop, see the kiln and glazing area, visit the gallery display space where you can relax and enjoy refreshments. You'll see works-in-progress, my toolkit, and I'll be on hand to explain the various techniques I use.

£ £16 - £300 FREE pocket-size pot for first ten Friends making a purchase

**Recommendation:**  
 Beautiful walk behind my studio, turning right back onto the Old Carlisle Road, past the Moffat Distillery.

**Directions:** Moffat is off main A74(M), A701, from Moffat Town A708, 0.5 mile turn right onto The Old Carlisle Road, then right turn onto Nethermiln Meadow, it's a cul de sac.

**Accessibility:** A few steps into studio and gallery. Parking at front and side of house, plus parking on road.

what3words: ///tailwind.zoned.shield



## JESSE BALL

# 94

The Eskdalemuir Hub, Eskdalemuir, DG13 0QJ  
 T: 07967 545 913 E: [jesse@jupitersgrace.com](mailto:jesse@jupitersgrace.com) f [jupitersgracebyjesse](https://www.facebook.com/jupitersgracebyjesse)  
 W: [www.jupitersgrace.com](http://www.jupitersgrace.com) @ [jupitersgracebyjesse](https://www.instagram.com/jupitersgracebyjesse)



Organic forms, sacred relics and ancient treasures, imperfect and marked by history inspire and excite me. I create jewellery in an intuitive way, transforming gold, silver and gems into wearable talismans. My jewellery can symbolise an intention, represent a story or mark a precious moment.

**What to expect:** As well as a friendly welcome, visitors will see my newest collection, sketchbooks, inspiration box of artefacts and some works in process.

£ £20 - £2,000

**Recommendation:**  
 The Eskdalemuir Hub café has some delicious cakes and teas as well as a playground.

**Directions:** From Lockerbie, on entering Eskdalemuir, just over the small bridge The Hub is on the left and car parking is on the other side of the road.

**Accessibility:** The Eskdalemuir Hub is fully wheelchair accessible.

what3words: ///torso.joyously.plenty





GLORIA NEWLAN

95

The Eskdalemuir Hub, Eskdalemuir, DG13 0QJ  
 T: 01387 373274 E: [glorianewlan@hotmail.com](mailto:glorianewlan@hotmail.com)  
 W: [gloria-newlan.pixels.com](http://gloria-newlan.pixels.com) @ [@glorianewlan](https://www.instagram.com/glorianewlan)



My paintings focus on the connections between plants, people & their environments, finding and exploring subjects that have real meaning to myself or others. Plant Spirit Medicine and keeping a perpetual art-journal inspire me. My paintings are complete when the images begin to dance and show their spirit.

**What to expect:** There will be watercolour paintings both framed and unframed, as well as graphite and loose style coloured pencil drawings. Giclee prints and greetings cards of the paintings will be available and botanical books, perpetual journal and work-in-progress.

£ £2.50 - £800

**Recommendation:**  
 A walk along the pathway from Eskdalemuir village to Samye Ling Tibetan Centre.

**Directions:** If coming to Eskdalemuir from Lockerbie or Langholm, the church will be on your left. Drive into the village over a small bridge to the Hub.

**Accessibility:** Fully accessible for everyone. Wheelchair access throughout.

**what3words:** ///shelved.junior.aviators



LIZ MCQUEEN

96

Mountview, Eskdalemuir, DG13 0QH  
 T: 07769 686 599 E: [mcqueene@hotmail.co.uk](mailto:mcqueene@hotmail.co.uk)  
 W: [www.lizmcqueen.com](http://www.lizmcqueen.com) f [lizmcqueenartist](https://www.facebook.com/lizmcqueenartist) @ [lizmcqueenart](https://www.instagram.com/lizmcqueenart)



My paintings are inspired and informed by the landscape immediately surrounding my studio. I work mostly in ink, watercolour and acrylic, in a expressive way, from sketches and photographs gathered on my walks around the valley.

**What to expect:** Visitors can expect a warm welcome to my studio where there will be a new work and sketchbooks on display, plus a range of cards, prints and original works for sale. There will be a comfy place to sit and take in the views.

£ £5 - £1,000 10% discount for Friends of Spring Fling and Prize Draw

**Recommendation:**  
 The Loupin Stanes are 1/2 mile from the studio.

**Directions:** From Lockerbie: turn right at Eskdale Prehistoric Trail – on to the B709 towards Langholm. Cross the bridge over the river. Mountview studio is on the left before the village boundary signs.

**Accessibility:** Ground floor studio with double access doors. Gravel driveway from B709.

**what3words:** ///hurls.howler.fuzz



CATHY VAN HOPPE

97

Summerford, Castle O'er, Eskdalemuir, DG13 0PJ  
 T: 07425 137 892 E: [theoldburrrow@gmail.com](mailto:theoldburrrow@gmail.com)  
 W: [www.theoldburrrow.com](http://www.theoldburrrow.com) f [theoldburrrow](https://www.facebook.com/theoldburrrow) @ [the.old.burrrow](https://www.instagram.com/the.old.burrrow)



My artwork explores the landscape of fairytales, a small portal for you to catch a glimpse into the 'Otherworld'. Inspired by late 19th century illustrators and folk tales of the North, my artwork is often described as ethereal and delicate.

**What to expect:** At my cottage garden studio you'll find a warm welcome, and of course original paintings! There will be 'works-in-progress', prints, cards, demonstrations and opportunities to 'have a go'. If the weather is fine, a drawing table in the garden. Drinks and snacks available.

£ £3 - £1,200 10% off for Friends of Spring Fling

**Recommendation:**  
 Castle O'er Hill Fort and 'Fairy Hill' in Eskdalemuir.

**Directions:** From Langholm take the B709, follow for 7.7 miles, veer left and continue for 2.4 miles, veer right at Bailliehill, follow the road until you reach Castle O'er.

**Accessibility:** The studio is in a gently sloping garden. There is 1 step up into the studio and 4 steps up to the toilet. Steps from the path.

**what3words:** ///homelands.enchanted.forgotten



LISA ROTHWELL-YOUNG

98

38 Henry Street, Langholm, DG13 0AS  
 T: 01387 381180 E: [info@lisarothwell-young.co.uk](mailto:info@lisarothwell-young.co.uk)  
 W: [www.lisarothwell-young.co.uk](http://www.lisarothwell-young.co.uk) f [LisaRothwellYoungJeweller](https://www.facebook.com/LisaRothwellYoungJeweller)



I create meaningful bespoke jewellery inspired by my customers' milestones and memories alongside collections inspired by the natural world. Working exclusively in responsibly sourced and recycled precious metals, gems and diamonds I also encourage my customers to reuse old jewellery by remodelling.

**What to expect:** You'll see my workshop and showroom, tools, work-in-progress and a selection of responsibly sourced gemstones. I'll be happy to talk about remodelling or bespoke commissions, and you're welcome to ask about responsible sourcing of precious metals and gems.

£ £49 - £20,000 10% off for Friends of Spring Fling

**Recommendation:**  
 Follow Easton's walk from the south end of the park, along the river to Skippers Bridge and back into Langholm.

**Directions:** Head north on the A7, turn left onto Thomas Telford Road, after 300m turn left (opp Buccleuch Centre) onto Henry St. You'll find me 150m on the right.

**Accessibility:** One step at front door, plus threshold. Ramp available, please ask. Reasonable amount of space inside for a wheelchair.

**what3words:** ///secures.stuff.initiates



## MILES-MOORE CERAMICS

# 99

Buccleuch Mills, Glenesk Road, Langholm, DG13 0ES  
 T: 01524 222590 E: [siobhan@milesmoore.co.uk](mailto:siobhan@milesmoore.co.uk)  
 W: [www.milesmooreceramics.com](http://www.milesmooreceramics.com) @MilesMooreClay



NEIGHBOUR

As award-winning makers of contemporary ceramics we use found and foraged materials in our glazes. This allows us to tell stories of place, and our relationship with it. Collaboration with chefs, tea masters and other creatives inspires us and is reflected in our work.

**What to expect:** We will present works-in-progress and give you access to videos and tutorials illustrating our approach and showcasing our own studio. We love to chat and help visitors understand more about our approach and how it may enhance their own experience.

£ £30 - £2,000 ..... Discounts for Friends of Spring Fling

### Recommendation:

We always get a warm welcome from the Eskdale Hotel and love the blend of visitors and locals to be found eating and drinking in the bar.

**Directions:** From A7 heading north to Langholm, take the first left after 30mph sign (Glenesk Road). Our studio is on the left after the former Edinburgh Woollen Mill buildings.

**Accessibility:** Easy parking. A kerb and doorstep to negotiate, both have ramps available if required. No disabled toilet.

what3words: ///much.magpie.novels



## DANIEL LACEY

# 100

Buccleuch Mills, Glenesk Road, Langholm, DG13 0ES  
 T: 01387 380193 E: [info@daniellacey.com](mailto:info@daniellacey.com) W: [www.daniellacey.com](http://www.daniellacey.com)  
 f [DanielLaceyDesignFurniture](https://www.facebook.com/DanielLaceyDesignFurniture) @ [daniellaceydesignfurniture](https://www.instagram.com/daniellaceydesignfurniture)



As an award-winning designer and maker of contemporary fine furniture, I produce sustainably, mainly from self-harvested, seasoned and dried local hardwoods. I predominantly work with bespoke commissions, plus exhibition pieces, and small limited-edition ranges. Everything is designed and created by me, to my own exacting standards.

**What to expect:** Tour my studio to see work-in-progress, exploratory work and finished pieces. Perhaps chat about my making you something unique either from your own tree, or from my extensive stock of local hardwood.

£ £70 - £25,000 ..... Discounts for Friends of Spring Fling

### Recommendation:

The newly expanded Tarras Valley Nature Reserve. Bought by the community (with generous outside support) for the community, and a home to many rare species of flora and fauna.

**Directions:** From A7 heading north to Langholm, take the first left after 30mph sign (Glenesk Road). My studio is on the left after the former Edinburgh Woollen Mill buildings.

**Accessibility:** Easy parking. A kerb and doorstep to negotiate both have a ramp available if required.

what3words: ///much.magpie.novels



## JACKIE ZEHNDER

# 101

Fern Ceramics, Hagg-on-Esk, Canonbie, DG14 0XE  
 T: 07544 981 183 E: [jackiezehnder@hotmail.co.uk](mailto:jackiezehnder@hotmail.co.uk)  
 @ [fern\\_ceramics\\_on\\_esk](https://www.instagram.com/fern_ceramics_on_esk)



I aim to transfer intricate leaf detail onto clay using the slabbing technique. I also integrate irregular uneven edges that gives each piece a unique form. I decorate my ceramics using oxides and a transparent glaze.

**What to expect:** At my studio there will be a display of each stage in the process of vase making along with the materials and equipment needed. Fresh leaves will be available for children to identify them on the work on display.

£ £2 - £250 ..... Free tea or coffee

### Recommendation:

The Malcolm Monument is perched on Whita Hill above Langholm with stunning views of the town and the surrounding area.

**Directions:** Fern Ceramics is located right on the A7. If coming from Dumfries it is 4 miles north of Canonbie and 3 miles south of Langholm.

**Accessibility:** Very accessible with parking in the courtyard right outside the studio if needed. Accessible indoor and outdoor seating.

what3words: ///helps.quilting.email



## HEATHER BLANCHARD

# 102

Craigshaw Barns, Waterbeck, Lockerbie, DG11 3AH  
 T: 07752 060 388 E: [hjblan@hotmail.com](mailto:hjblan@hotmail.com)  
 W: [www.blanchart.co.uk](http://www.blanchart.co.uk) f [heatherblanchardartist](https://www.facebook.com/heatherblanchardartist)



A daily walk is the beginning of my creative process. My work is an accumulation of the places, memories, weather and light conditions that I see on a daily basis. The challenge is to convey that with paint on canvas.

**What to expect:** Visitors will be warmly welcomed into a working studio. There will be a display of finished paintings along with work-in-progress, sketchbooks and all the materials I use. I will be happy to demonstrate and discuss my working methods.

£ £300 - £1,250 ..... 10% discount for Friends of Spring Fling

### Recommendation:

Annandale Distillery: tours of a working distillery with whisky tasting and a great café for a delicious lunch.

**Directions:** Leave M74 junction 20. Follow signs for Eaglesfield. Pass through Eaglesfield. Take a left turn to Gair, after 2 miles pass through Gair. Studio is half a mile on left.

**Accessibility:** Loose gravel yard and steps into the studio.

what3words: ///verse.belonging.spans



## COLIN BLANCHARD

103

Craigshaw Barns, Waterbeck, Lockerbie, DG11 3AH  
 T: 07714 123 227 E: [colin@colinblanchard.com](mailto:colin@colinblanchard.com)  
 W: [www.colinblanchard.com](http://www.colinblanchard.com) f [colinblanchardprints](https://www.facebook.com/colinblanchardprints)



I am first and foremost a printmaker. I am continually fascinated by image making that is a result of (often traditional) practical craft skills; which create original prints – never reproductions – in editions genuinely ‘limited’ by the accumulative, progressive nature of their making.

**What to expect:** We have recently expanded our shared studio to create a new, fully equipped print workshop. I will show and demonstrate a variety of printmaking methods and machinery and visitors will be offered the opportunity to ‘pull’ a print themselves to take away on the day.

£ £20 - £300 ..... 10% discount for Friends of Spring Fling 🐦

**Recommendation:**  
 Burnside walk to graveyard and ruin of Old Kirkconnel church.

**Directions:** M74 J.20 Through Eaglesfield. After Springkell Estate entrance, take first turning left signed Gair. Follow road for 2.5 miles.

**Accessibility:** Two steps up to studio. Gravel yard.

what3words: ///verse.belonging.spans



## BELLA GREEN

104

Mansefield Studio, Behind Church Bridge St, Lockerbie, DG11 2HE  
 T: 07775 686 381 E: [mail@bellagreen.co.uk](mailto:mail@bellagreen.co.uk)  
 W: [www.bellagreen.co.uk](http://www.bellagreen.co.uk) f [BellaGreenArtist](https://www.facebook.com/BellaGreenArtist) @ [BellaGreenArt](https://www.instagram.com/BellaGreenArt)



Objects in my home and studio, with memories attached to people and places, provide my starting points. Flowers are also a constant source of beauty and beginnings. I combine these with views to the outside – places I have been, or long to be.

**What to expect:** There will be a warm welcome and paintings in oils and acrylics, and my colourful polymer clay art jewellery. Also greetings cards and some drawings along with sketchbooks and displays sharing my process and working practice.

£ £5 - £2,000 ..... 10% off to Friends of Spring Fling on items over £50 🐦

**Recommendation:**  
 JustBe café and bistro in the High St opposite Town Hall. Coffee, cakes and lovely lunches.

**Directions:** From Town Hall clock tower in the High St, head up Bridge Street, over railway bridge, 100m on the right, Mansefield Garden Studio is behind the church.

**Accessibility:** Two shallow steps up into studio.

what3words: ///animated.attention.free

# Dumfries & Galloway Life

For everyone who loves South West Scotland

An inspiring, entertaining and informative read each month, featuring the best of Dumfries & Galloway, from its people and places to arts and culture, food and drink, history, wildlife, walking, homes and gardens, plus style and retail, leisure and sport, business, and award-winning photography.

Subscribe to have the magazine delivered direct to your door every month:

**call 01228 612625 for our latest subscription offers**

**The region's favourite magazine is proud to be media partner of Spring Fling 2024**

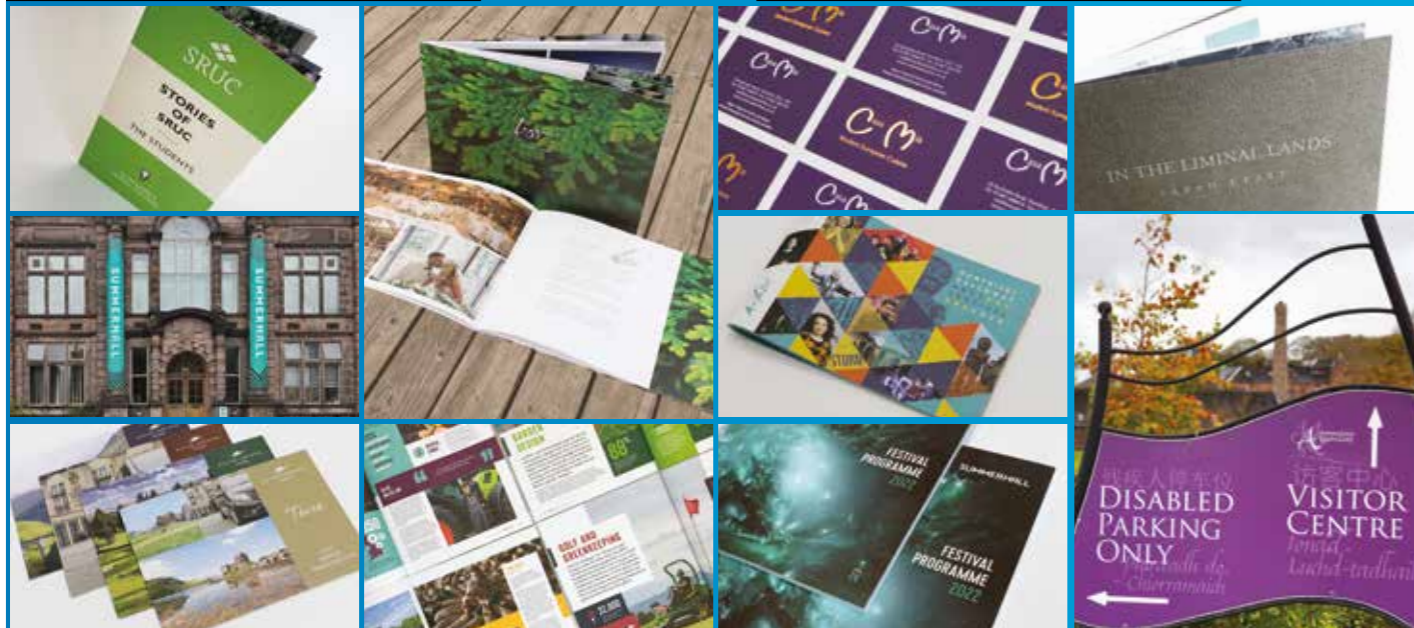
**Why not nominate your favourite Spring Fling artist or maker for one of our prestigious Dumfries & Galloway Life Awards this year?**

**[www.dumfriesandgallowaylife.co.uk](http://www.dumfriesandgallowaylife.co.uk)**



# // Design // Print // Display

With a dedicated management team, a highly experienced team of graphic designers and a professionally trained print production team, we pride ourselves in delivering quality products and outstanding customer service.



1 St Michael St, Dumfries DG1 2QD  
01387 266992 / [info@albaprinters.co.uk](mailto:info@albaprinters.co.uk) / [www.albaprinters.co.uk](http://www.albaprinters.co.uk)



## UPLAND made

*Upland made is a visual art and craft fair selling handmade, bespoke and unique work made by Upland members. It celebrates the handmade; the Upland made. It invites you to shop for unique, handmade items created by local artists and makers.*

The event takes place at Easterbrook Hall in Dumfries in November each year. The dates for the 2024 event are: **2nd & 3rd November 2024**

Produced by Upland CIC, the fair was established in 2021 as a response to the pandemic, with the aim of giving Upland members more opportunities to sell their work and to connect with customers in a safe environment. Three fairs later and the event is fast becoming a regular fixture in the annual calendar.

The fair is a wonderful opportunity to buy unique treasures for yourself – or special gifts for loved ones – with stands selling everything from

greetings cards, pottery and jewellery to large framed paintings, furniture and prints. As the event is for Upland members, you will find some of our Spring Fling participants at the fair as well as exhibitors that will be new to you!

Each year we have new stands and new activities. The fair is a great place to shop for Christmas gifts, to bring the family and to support small independent creative businesses by shopping local.

Find out about Upland made:  
[www.weareupland.com/projects/upland-made-fair](http://www.weareupland.com/projects/upland-made-fair)



# SPRINGFLING

Scotland's Premier Art and Craft Open Studios Event

## Support Us

If you have enjoyed your visit, why not support us with a donation?

Donations go a long way to help with print costs and replacing signage.

Find out more information at [www.spring-fling.co.uk](http://www.spring-fling.co.uk) or scan this QR code with your phone to make a donation:



# STRANRAER SKIFFIE WORLDS

6-12 JULY 2025

## The Skiffie Worlds returns to Stranraer in 2025!

Save the date: **6-12 July 2025**

[www.stranraerwatersports.com](http://www.stranraerwatersports.com)




## Gracefield Arts Centre

28 Edinburgh Road, Dumfries, DG1 1JQ  
[dgculture.co.uk](http://dgculture.co.uk) Tel 01387 262084

VISUAL ART AND CRAFT EXHIBITIONS | CONTEMPORARY CRAFT SHOP | CAFE

### Exhibitions May – June

#### Central Booking Presents: The Visual Read

New York artists curated by Maddy Rosenberg with guest Dumfries and Galloway artists Hugh Bryden and Linda Mallett.

**Crafted Selves:**  
The Unfinished Conversation  
Dual identity explored through the work of 13 Scottish artists.



Emelia Kerr Beale, trust for support, 2022.

Exhibitions	Open Tues–Sat 10am – 5pm and Spring Fling Weekend
Craft Shop	Tues–Fri 10.30am – 3.30pm, Sat 10am – 5pm
Café	Tues–Sat, 10am – 3.30pm



# Spring Fling Open Studios is produced by Upland CIC.

[www.weareupland.com](http://www.weareupland.com)



# Upland

*As the visual arts and crafts development organisation for Dumfries & Galloway, Upland aims to provide a network for learning and sharing, offering advice and support to creative practitioners whilst aiming to inspire and educate a wide range of audiences to participate in and be supportive of visual arts and crafts.*



Frances Ross, ROAM (West).  
Photo by Colin Tennant



As a membership organisation we work to create opportunities that connect our artists and makers with audiences, communities and each other. With a strong sense of place, we aim to highlight and celebrate our unique region and its creative community, raising its profile in a national and international context.

## CURRENT PROJECTS

This year we have a full programme of events and projects, including the continuation of ROAM (Space) – a new project which aims to support emerging contemporary artists develop their practice and connect with practitioners in D&G and beyond. Alongside our Emerge programme, these two initiatives seek to ensure emerging practitioners have the support in place to take the next steps in their creative careers.

Our early engagement programme will also continue throughout 2024, taking artists and makers into schools across the region to give talks and workshops. We are also delighted to be working with the Better Lives Partnership in Stranraer, co-creating a making project with the young people they support.

We'll be continuing to support our members through professional development opportunities, including developing a new residency exchange, exhibitions and our art and craft fair – Upland made, which brings a selection of our artists and makers under one roof in the run up to the festive period.

To keep in touch with all our projects and events throughout the year, please visit [www.weareupland.com](http://www.weareupland.com).



Morag Macpherson & Tellas.  
Photo by Kirstin McEwan



ROAM (Space), work by Liv McDougall.  
Photo by Kirstin McEwan

# Who we are

## Board of Directors

Wendy Macleod  
Chair

Eva Milroy  
Grainne Rice  
Graeme Dignan  
Caryl Hamilton  
Kim Ayres  
Linda Irving  
Mark Welland  
Linda Mallett  
Catherine Coulson

## Staff

Amy Marletta  
Creative Director

Joanna Jones  
Assistant Director

Lin Worthy  
Finance and Admin Officer

Chris Bridgman  
Events & Exhibitions  
Coordinator

Sahar El-Hady  
Youth & Engagement  
Coordinator

Amy Lord  
Digital Communications

## 2024 Selection Panel

Lucy Macleod  
Linda Mallett  
James Harvey  
Amanda Simmons  
Jo Gallant  
Yvonne Barber  
James Anderson  
(Observer)

## Design & Print

Alba Printers

## Illustration

Jamie Rose Stryker

## Web Development

David Kelly Design Office  
Catherine Major Arts

## Photography

Colin Tennant  
Colin Hattersley  
Kirstin McEwan

## PR

Scottish Festivals PR

## Media Partner

Dumfries & Galloway Life

Upland is also supported by a dedicated number of our artists and makers who offer their expertise and experience through the year across a range of projects.



## Index – Spring Fling participants by discipline:

### Metalwork

Adam Booth .....(Studio 60, p43)  
Timothy Westley .....(Studio 18, p20)

### Ceramics

Andrew Adair .....(Studio 77, p51)  
Heather Armstrong .....(Studio 80, p53)  
Kerry Samantha Boyes .....(Studio 25, p24)  
Clare Dawdry .....(Studio 63, p44)  
Fitch and McAndrew .....(Studio 57, p41)  
Julian Francis .....(Studio 47, p36)  
Mary Gladstone .....(Studio 15, p19)  
Elspeth Hart .....(Studio 71, p48)  
Ruth Elizabeth Jones .....(Studio 83, p55)  
Archie McCall .....(Studio 70, p48)  
Ella McCreath .....(Studio 09, p16)  
Lorna Phillips .....(Studio 58, p42)  
Frances Ross .....(Studio 08, p15)  
Miles-Moore Ceramics .....(Studio 99, p64)  
Samuel Sparrow .....(Studio 87, p57)  
Joshua Williams .....(Studio 17, p20)  
Rebecca J Woods .....(Studio 93, p61)  
Jackie Zehnder .....(Studio 101, p65)

### Furniture

Rachel Ashcroft .....(Studio 74, p50)  
Ian Cameron-Smith .....(Studio 24, p23)  
Laura Derby .....(Studio 35, p29)  
Daniel Lacey .....(Studio 100, p64)

### Glass

Katy Quinn .....(Studio 38, p30)

### Hats

Kay Ribbens .....(Studio 13, p18)

### Illustration

Louisa Birdsall .....(Studio 65, p45)  
Ailsa Black .....(Studio 69, p47)  
Lucy Hadley .....(Studio 26, p24)  
Suzi Plunkett .....(Studio 16, p19)  
Cathy van Hoppe .....(Studio 97, p63)

### Installation

Bea Last .....(Studio 78, p52)  
Leeming & Paterson .....(Studio 54, p40)  
Hope London .....(Studio 10, p16)  
Sarah McCusker .....(Studio 53, p39)  
Anne Waggot Knott .....(Studio 43, p34)

### Jewellery

Jesse Ball .....(Studio 94, p61)  
Elizabeth Gault .....(Studio 40, p31)  
Elspeth Hart .....(Studio 71, p48)  
Alison Macleod .....(Studio 85, p56)  
Sheena McMaster .....(Studio 22, p22)  
Katy Quinn .....(Studio 38, p30)  
Kaz Robertson .....(Studio 86, p56)  
Sarah Rogers .....(Studio 20, p21)  
Lisa Rothwell-Young .....(Studio 98, p63)  
Natalie Vardey .....(Studio 56, p41)

### Mixed Media

Annirose Ansbro .....(Studio 31, p27)  
Tricia Barna .....(Studio 79, p52)  
Hugh Bryden .....(Studio 82, p54)  
Hazel Campbell .....(Studio 49, p37)  
Hetal Chudasama .....(Studio 89, p58)

Alison Corfield .....(Studio 29, p26)  
Bella Green .....(Studio 104, p66)  
Lucy Hadley .....(Studio 26, p24)  
Sally Jennings .....(Studio 59, p42)  
Gail Kelly .....(Studio 02, p12)  
Bea Last .....(Studio 78, p52)  
Leeming & Paterson .....(Studio 54, p40)  
Patti Leino .....(Studio 34, p28)  
Hope London .....(Studio 10, p16)  
Morag Macpherson .....(Studio 55, p40)  
Sarah McCusker .....(Studio 53, p39)  
Joanna Shennan .....(Studio 76, p51)  
Anne Waggot Knott .....(Studio 43, p34)  
Glenda Waterworth .....(Studio 05, p14)  
Emma Watson .....(Studio 73, p49)

### Painting & Drawing

Annirose Ansbro .....(Studio 31, p27)  
Tricia Barna .....(Studio 79, p52)  
Kate Bentley .....(Studio 67, p46)  
Louisa Birdsall .....(Studio 65, p45)  
Ailsa Black .....(Studio 69, p47)  
Heather Blanchard .....(Studio 102, p65)  
Davy Brown .....(Studio 12, p17)  
Hugh Bryden .....(Studio 82, p54)  
Anne Butler .....(Studio 90, p58)  
Hazel Campbell .....(Studio 49, p37)  
Hetal Chudasama .....(Studio 89, p58)  
Ruth Clayton .....(Studio 91, p60)  
Liz Dagg .....(Studio 23, p23)  
Heather Davies .....(Studio 30, p26)  
Lizzie Farey .....(Studio 36, p29)  
Richard Foster .....(Studio 92, p60)  
Elizabeth Gilbey .....(Studio 19, p21)  
Bella Green .....(Studio 104, p66)  
Amanda Hayler .....(Studio 01, p12)  
Julie Hollis .....(Studio 27, p25)  
Sally Jennings .....(Studio 59, p42)  
Bea Last .....(Studio 78, p52)  
Angela Lawrence .....(Studio 48, p37)  
Patti Leino .....(Studio 34, p28)  
Yuliya Lennon .....(Studio 64, p45)  
Hope London .....(Studio 10, p16)  
Sheena McCurrach .....(Studio 52, p39)  
Sarah McCusker .....(Studio 53, p39)  
Scott McFarlane .....(Studio 21, p22)  
Caroline McGonigal .....(Studio 72, p49)  
Ian McKinnell .....(Studio 50, p38)  
Liz McQueen .....(Studio 96, p62)  
Gloria Newlan .....(Studio 95, p62)  
Heather M Nisbet .....(Studio 41, p32)  
Sarah Louise Plant .....(Studio 14, p18)  
Suzi Plunkett .....(Studio 16, p19)  
Alexander Robb .....(Studio 81, p54)  
Sarah Ross-Thompson .....(Studio 03, p13)  
Joanna Shennan .....(Studio 76, p51)  
Philippa Sinclair .....(Studio 66, p46)  
William Spurway .....(Studio 75, p50)  
Suzanne Stuart Davies .....(Studio 46, p36)  
Cathy van Hoppe .....(Studio 97, p63)  
Anne Waggot Knott .....(Studio 43, p34)  
Glenda Waterworth .....(Studio 05, p14)  
Emma Watson .....(Studio 73, p49)

### Photography

Kim Ayres .....(Studio 51, p38)  
Savannah Crosby .....(Studio 44, p35)  
Alistair Hamilton .....(Studio 28, p25)  
Leeming & Paterson .....(Studio 54, p40)  
Ian McKinnell .....(Studio 50, p38)  
David Quinn .....(Studio 39, p31)  
Allan Wright .....(Studio 62, p44)

### Printmaking

Colin Blanchard .....(Studio 103, p66)  
Laura Boswell .....(Studio 32, p27)  
Hugh Bryden .....(Studio 82, p54)  
Alan Cameron .....(Studio 68, p47)  
Claire Cameron-Smith .....(Studio 37, p30)  
Hazel Campbell .....(Studio 49, p37)  
Hetal Chudasama .....(Studio 89, p58)  
Pamela Grace .....(Studio 61, p43)  
Lucy Hadley .....(Studio 26, p24)  
Lisa Hooper .....(Studio 07, p15)  
Gail Kelly .....(Studio 02, p12)  
Joshua Miles .....(Studio 33, p28)  
Sarah Stewart .....(Studio 11, p17)  
Anne Waggot Knott .....(Studio 43, p34)

### Sculpture

Adam Booth .....(Studio 60, p43)  
Kerry Samantha Boyes .....(Studio 25, p24)  
Ian Cameron-Smith .....(Studio 24, p23)  
Lizzie Farey .....(Studio 36, p29)  
Julian Francis .....(Studio 47, p36)  
Ruth Elizabeth Jones .....(Studio 83, p55)  
Daniel Lacey .....(Studio 100, p64)  
Bea Last .....(Studio 78, p52)  
Lorna Phillips .....(Studio 58, p42)  
Frances Ross .....(Studio 08, p15)  
Miles-Moore Ceramics .....(Studio 99, p64)

### Textiles

Deborah Campbell .....(Studio 84, p55)  
Laura Derby .....(Studio 35, p29)  
Lucy Hadley .....(Studio 26, p24)  
Janet Ibbotson .....(Studio 45, p35)  
Linda Irving .....(Studio 06, p14)  
Gail Kelly .....(Studio 02, p12)  
Morag Macpherson .....(Studio 55, p40)  
Kay Ribbens .....(Studio 13, p18)  
Sarah Stewart .....(Studio 11, p17)  
Suzanne Stuart Davies .....(Studio 46, p36)  
Gyllian Thomson .....(Studio 88, p57)

### Wood/Willow

Rachel Ashcroft .....(Studio 74, p50)  
Ian Cameron-Smith .....(Studio 24, p23)  
Lizzie Farey .....(Studio 36, p29)  
Jane Fraser .....(Studio 04, p13)  
Daniel Lacey .....(Studio 100, p64)  
Jay Rubinstein .....(Studio 42, p34)



# Index – Spring Fling participants alphabetically:

## A – C

- Andrew Adair ..... (Studio 77, p51)
- Annirose Ansbro ..... (Studio 31, p27)
- Heather Armstrong .... (Studio 80, p53)
- Rachel Ashcroft ..... (Studio 74, p50)
- Kim Ayres ..... (Studio 51, p38)
- Jesse Ball ..... (Studio 94, p61)
- Tricia Barna ..... (Studio 79, p52)
- Kate Bentley ..... (Studio 67, p46)
- Louisa Birdsall ..... (Studio 65, p45)
- Ailsa Black ..... (Studio 69, p47)
- Heather Blanchard .... (Studio 102, p65)
- Colin Blanchard ..... (Studio 103, p66)
- Adam Booth ..... (Studio 60, p43)
- Laura Boswell ..... (Studio 32, p27)
- Kerry Samantha Boyes . (Studio 25, p24)
- Davy Brown ..... (Studio 12, p17)
- Hugh Bryden ..... (Studio 82, p54)
- Anne Butler ..... (Studio 90, p58)
- Alan Cameron ..... (Studio 68, p47)
- Ian Cameron-Smith .... (Studio 24, p23)
- Claire Cameron-Smith . (Studio 37, p30)
- Deborah Campbell .... (Studio 84, p55)
- Hazel Campbell ..... (Studio 49, p37)
- Hetal Chudasama ..... (Studio 89, p58)
- Ruth Clayton ..... (Studio 91, p60)
- Alison Corfield ..... (Studio 29, p26)
- Savannah Crosby ..... (Studio 44, p35)

## D – H

- Liz Dagg ..... (Studio 23, p23)
- Heather Davies ..... (Studio 30, p26)
- Clare Dawdry ..... (Studio 63, p44)
- Laura Derby ..... (Studio 35, p29)
- Lizzie Farey ..... (Studio 36, p29)
- Fitch and McAndrew ... (Studio 57, p41)
- Richard Foster ..... (Studio 92, p60)
- Julian Francis ..... (Studio 47, p36)
- Jane Fraser ..... (Studio 04, p13)
- Elizabeth Gault ..... (Studio 40, p31)
- Elizabeth Gilbey ..... (Studio 19, p21)
- Mary Gladstone ..... (Studio 15, p19)
- Pamela Grace ..... (Studio 61, p43)
- Bella Green ..... (Studio 104, p66)

- Lucy Hadley ..... (Studio 26, p24)
- Alistair Hamilton ..... (Studio 28, p25)
- Elsbeth Hart ..... (Studio 71, p48)
- Amanda Hayler ..... (Studio 01, p12)
- Julie Hollis ..... (Studio 27, p25)
- Lisa Hooper ..... (Studio 07, p15)

## I – L

- Janet Ibbotson ..... (Studio 45, p35)
- Linda Irving ..... (Studio 06, p14)
- Sally Jennings ..... (Studio 59, p42)
- Ruth Elizabeth Jones ... (Studio 83, p55)
- Gail Kelly ..... (Studio 02, p12)
- Daniel Lacey ..... (Studio 100, p64)
- Bea Last ..... (Studio 78, p52)
- Angela Lawrence ..... (Studio 48, p37)
- Leeming & Paterson ... (Studio 54, p40)
- Patti Leino ..... (Studio 34, p28)
- Yuliya Lennon ..... (Studio 64, p45)
- Hope London ..... (Studio 10, p16)

## M – R

- Alison Macleod ..... (Studio 85, p56)
- Morag Macpherson .... (Studio 55, p40)
- Archie McCall ..... (Studio 70, p48)
- Ella McCreath ..... (Studio 09, p16)
- Sheena McCurrach .... (Studio 52, p39)
- Sarah McCusker ..... (Studio 53, p39)
- Scott McFarlane ..... (Studio 21, p22)
- Caroline McGonigal .... (Studio 72, p49)
- Ian McKinnell ..... (Studio 50, p38)
- Sheena McMaster ..... (Studio 22, p22)
- Liz McQueen ..... (Studio 96, p62)
- Joshua Miles ..... (Studio 33, p28)
- Miles-Moore Ceramics . (Studio 99, p64)
- Gloria Newlan ..... (Studio 95, p62)
- Heather M Nisbet ..... (Studio 41, p32)
- Lorna Phillips ..... (Studio 58, p42)
- Sarah Louise Plant ..... (Studio 14, p18)
- Suzi Plunkett ..... (Studio 16, p19)
- David Quinn ..... (Studio 39, p31)

- Katy Quinn ..... (Studio 38, p30)
- Kay Ribbens ..... (Studio 13, p18)
- Alexander Robb ..... (Studio 81, p54)
- Kaz Robertson ..... (Studio 86, p56)
- Sarah Rogers ..... (Studio 20, p21)
- Frances Ross ..... (Studio 08, p15)
- Sarah Ross-Thompson . (Studio 03, p13)
- Lisa Rothwell-Young ... (Studio 98, p63)
- Jay Rubinstein ..... (Studio 42, p34)

## S – Z

- Joanna Shennan ..... (Studio 76, p51)
- Philippa Sinclair ..... (Studio 66, p46)
- Samuel Sparrow ..... (Studio 87, p57)
- William Spurway ..... (Studio 75, p50)
- Sarah Stewart ..... (Studio 11, p17)
- Suzanne Stuart Davies . (Studio 46, p36)
- Gyllian Thomson ..... (Studio 88, p57)
- Cathy van Hoppe ..... (Studio 97, p63)
- Natalie Vardey ..... (Studio 56, p41)
- Anne Waggot Knott .... (Studio 43, p34)
- Glenda Waterworth .... (Studio 05, p14)
- Emma Watson ..... (Studio 73, p49)
- Timothy Westley ..... (Studio 18, p20)
- Joshua Williams ..... (Studio 17, p20)
- Rebecca J Woods ..... (Studio 93, p61)
- Allan Wright ..... (Studio 62, p44)
- Jackie Zehnder ..... (Studio 101, p65)



## OUR SUPPORTERS

### Event Funders



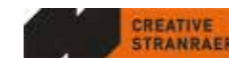
### Year-Round Partners and Funders



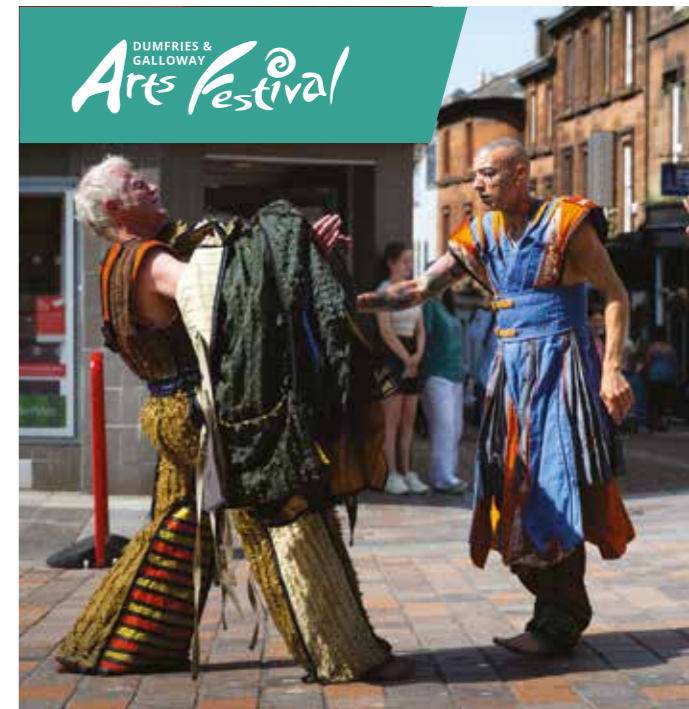
### Sponsors and Supporters



### Special Programme Partners



### Green Partners



## Spring Fling Prize Draw

Thank you so much for coming to Spring Fling 2024! It would be very helpful to us if you could fill out a brief visitor survey, answering all the questions from your own individual perspective. This form can be found on the Spring Fling website and is to be completed online, in the hope of reducing paper and postage. You could win vouchers to buy some great art and craft – and more:

**1st Prize**  
£100 voucher to spend in the artist's studio of your choice; plus 2 tickets to any event at the 2025 Dumfries & Galloway Arts Festival.

**2nd Prize**  
£75 voucher to spend in the artist's studio of your choice.

**3rd Prize**  
£50 voucher to spend in the artist's studio of your choice.



**To Enter**  
Please go to the questionnaire on our website: [www.spring-fling.co.uk](http://www.spring-fling.co.uk) – or, scan this QR code.



